

MODEL NAME : *NIM10*
PCB NO : *LA-5732P (DA60000EI00)*
BOM P/N : *43178431L01*

Compal Confidential

SAMOS Schematics Document

Intel Pineview-M Processor with TigerPoint

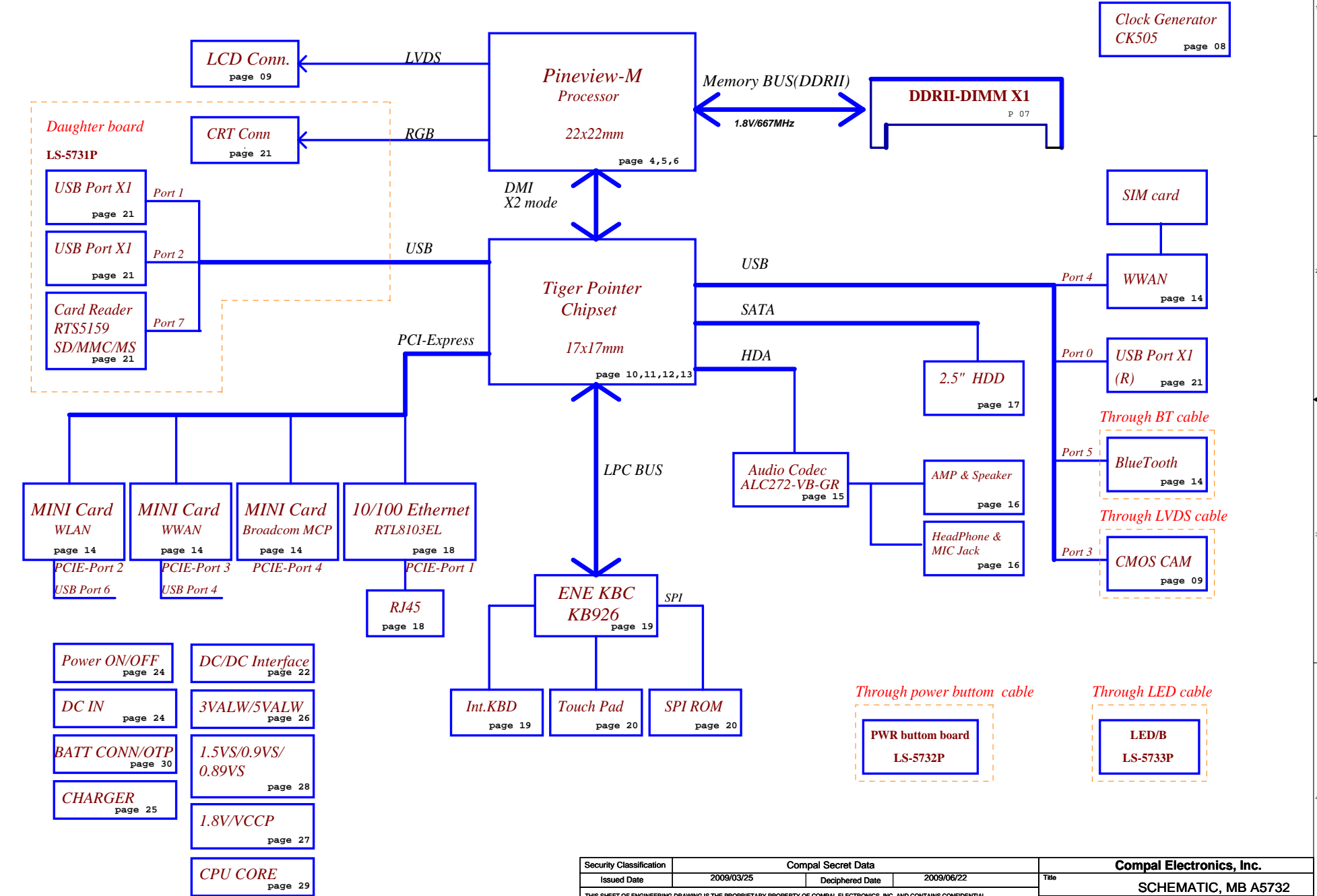
2009-8-21
REV: 0.2

@ : Nopop Component

Security Classification		Compal Secret Data		Compal Electronics, Inc.	
Issued Date	2009/03/25	Deciphered Date	2009/06/22	Title	
THIS SHEET OF ENGINEERING DRAWING IS THE PROPRIETARY PROPERTY OF COMPAL ELECTRONICS, INC. AND CONTAINS CONFIDENTIAL AND TRADE SECRET INFORMATION. THIS SHEET MAY NOT BE TRANSFERRED FROM THE CUSTODY OF THE COMPETENT DIVISION OF R&D DEPARTMENT EXCEPT AS AUTHORIZED BY COMPAL ELECTRONICS, INC. NEITHER THIS SHEET NOR THE INFORMATION IT CONTAINS MAY BE USED BY OR DISCLOSED TO ANY THIRD PARTY WITHOUT PRIOR WRITTEN CONSENT OF COMPAL ELECTRONICS, INC.				SCHEMATIC, MB A5732	
				Size	Document Number
				Custom	401784
				Date:	Wednesday, September 16, 2009
				Sheet	1 of 33
				Rev	A

Compal Confidential

Model Name : NIM10
Project Code:
Project Name : LA-5732P



Voltage Rails

Power Plane	Description	S1	S3	S5
VIN	Adapter power supply (19V)	N/A	N/A	N/A
B+	AC or battery power rail for power circuit.	N/A	N/A	N/A
+CPU_CORE	Core voltage for CPU	ON	OFF	OFF
+0.9VS	0.9V switched power rail for DDR terminator	ON	OFF	OFF
+VCCP	VCCP switched power rail	ON	OFF	OFF
+1.5VS	1.5V switched power rail	ON	OFF	OFF
+1.8V	1.8V power rail for DDR	ON	ON	OFF
+0.89VS	CORE VOLTAGE FOR CPU VGA	ON	OFF	OFF
+3VALW	3.3V always on power rail	ON	ON	ON*
+3VS	3.3V switched power rail	ON	OFF	OFF
+5VALW	5V always on power rail	ON	ON	ON*
+5VS	5V switched power rail	ON	OFF	OFF
+VS	VS always on power rail	ON	ON	ON*
+RTCBATT	RTC power	ON	ON	ON

Note : ON* means that this power plane is ON only with AC power available, otherwise it is OFF.

STATE \ SIGNAL	SLP_S3#	SLP_S4#	SLP_S5#	+VALW	+V	+VS	Clock
Full ON	HIGH	HIGH	HIGH	ON	ON	ON	ON
S1(Power On Suspend)	HIGH	HIGH	HIGH	ON	ON	ON	LOW
S3 (Suspend to RAM)	LOW	HIGH	HIGH	ON	ON	OFF	OFF
S4 (Suspend to Disk)	LOW	LOW	HIGH	ON	OFF	OFF	OFF
S5 (Soft OFF)	LOW	LOW	LOW	ON	OFF	OFF	OFF

BOARD ID Table(Page 19)

VCC	3.3V +/-5%					
ID	BRD ID	Ra	Rb	Vab (Min)	Vab (Type)	Vab (Max)
0	R01 (SSI)	NC	0	0V	0V	0.155V
1	R02 (ST)	100K +/- 5%	8.2K +/- 5%	0.168V	0.250V	0.362V
2	R10 (X build)	100K +/- 5%	18K +/- 5%	0.375V	0.503V	0.621V
3	Reserved	100K +/- 5%	33K +/- 5%	0.634V	0.819V	0.945V
4	Reserved	100K +/- 5%	56K +/- 5%	0.958V	1.185V	1.359V
5	Reserved	100K +/- 5%	100K +/- 5%	1.372V	1.650V	1.838V
6	Reserved	100K +/- 5%	200K +/- 5%	1.851V	2.200V	2.420V
7	MP	100K +/- 5%	NC	2.433V	3.300V	3.300V

External PCI Devices

DEVICE	IDSEL #	REQ/GNT #	PIRQ
--------	---------	-----------	------

No PCI Device

EC SM Bus1 address

Device
Smart Battery
EEPROM(24C16/02)

Address
0001 011X b
1010 000X b

EC SM Bus2 address

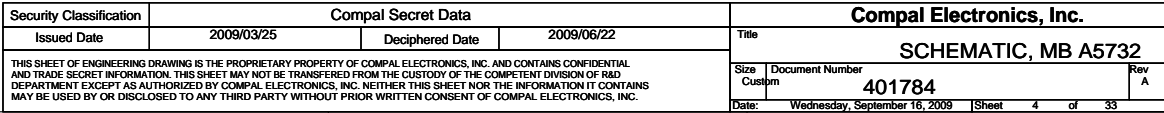
Device
W83L771AWG
EMC1402

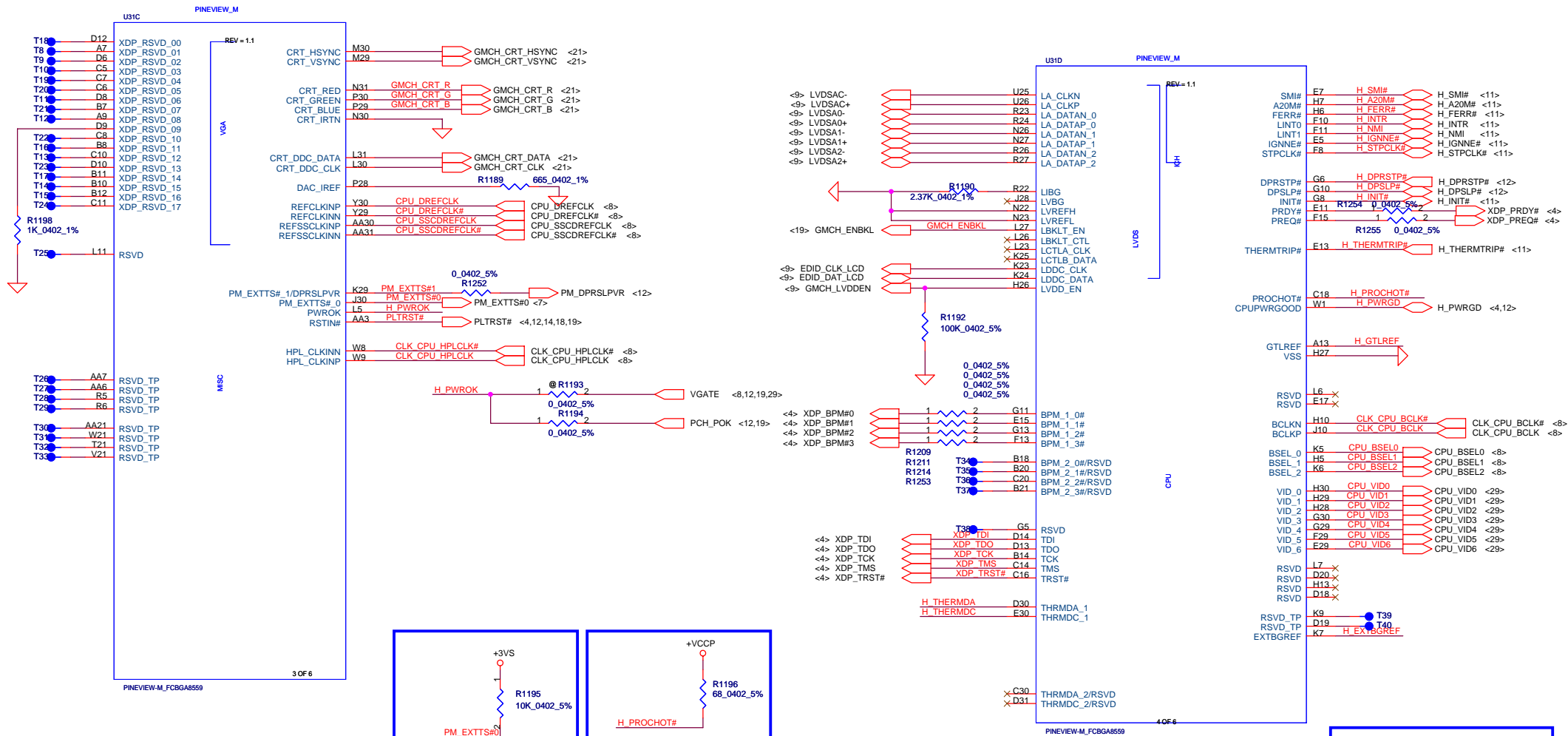
Address
1001_100X b
100_1100X b

Tiger Point SM Bus address

Device
Clock Generator (SLG8SP556VTR)
DDR DIMMA

Address
1101 001Xb
1010 000Xb





H_THERMDA, H_THERMDC routing together.
Trace width / Spacing = 10 / 10 mil

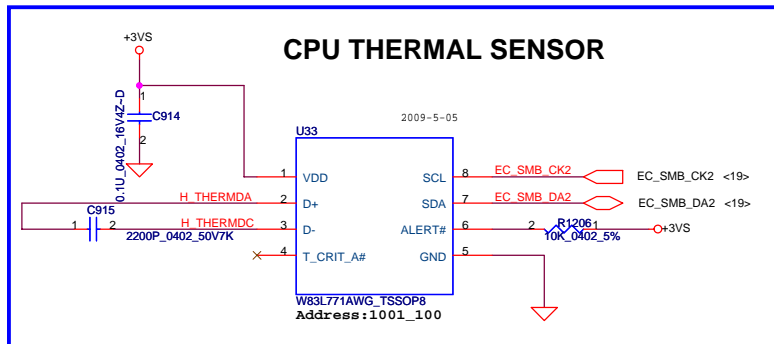
Close to Processor pin

Close to Processor pin

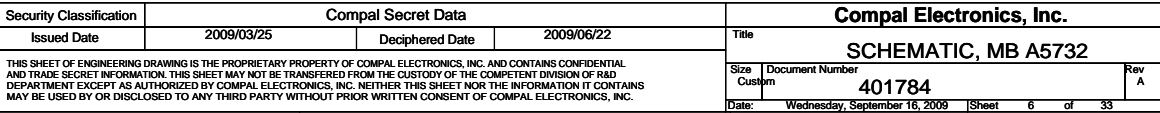
Place closed to chipset

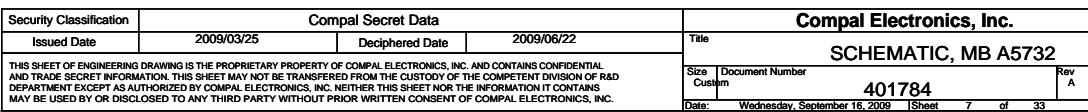
placed within 0.5"
of processor pin.

placed within 0.5"
of processor pin.

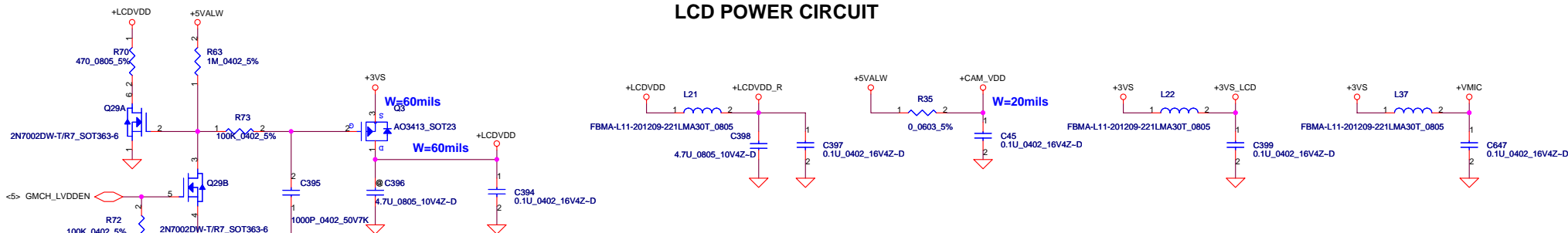


Security Classification				Compal Secret Data				Compal Electronics, Inc.		
Issued Date		2009/03/25		Deciphered Date		2009/06/22		Title		
								SCHEMATIC, MB A5732		
THIS SHEET OF ENGINEERING DRAWING IS THE PROPRIETARY PROPERTY OF COMPAL ELECTRONICS, INC. AND CONTAINS CONFIDENTIAL AND TRADE SECRET INFORMATION. THIS SHEET MAY NOT BE TRANSFERRED FROM THE CUSTODY OF THE COMPETENT DIVISION OF R&D DEPARTMENT EXCEPT AS AUTHORIZED BY COMPAL ELECTRONICS, INC. NEITHER THIS SHEET NOR THE INFORMATION IT CONTAINS MAY BE USED BY OR DISCLOSED TO ANY THIRD PARTY WITHOUT PRIOR WRITTEN CONSENT OF COMPAL ELECTRONICS, INC.								Size	Document Number	Rev
								Custom	401784	A
Date:		Wednesday, September 16, 2009		Sheet		5		of 33		

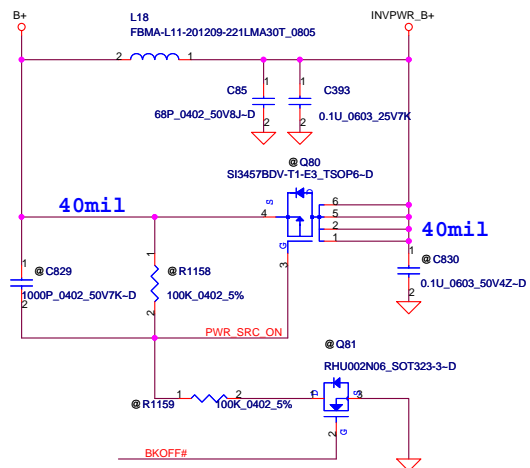
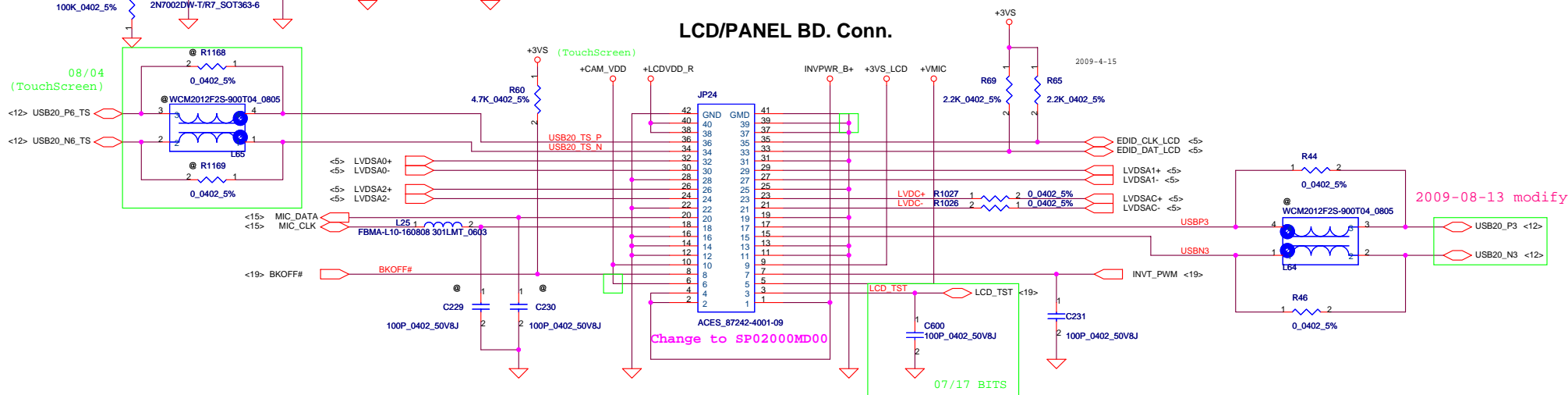




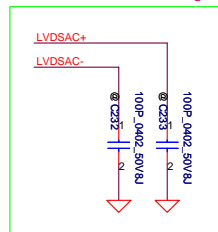
LCD POWER CIRCUIT



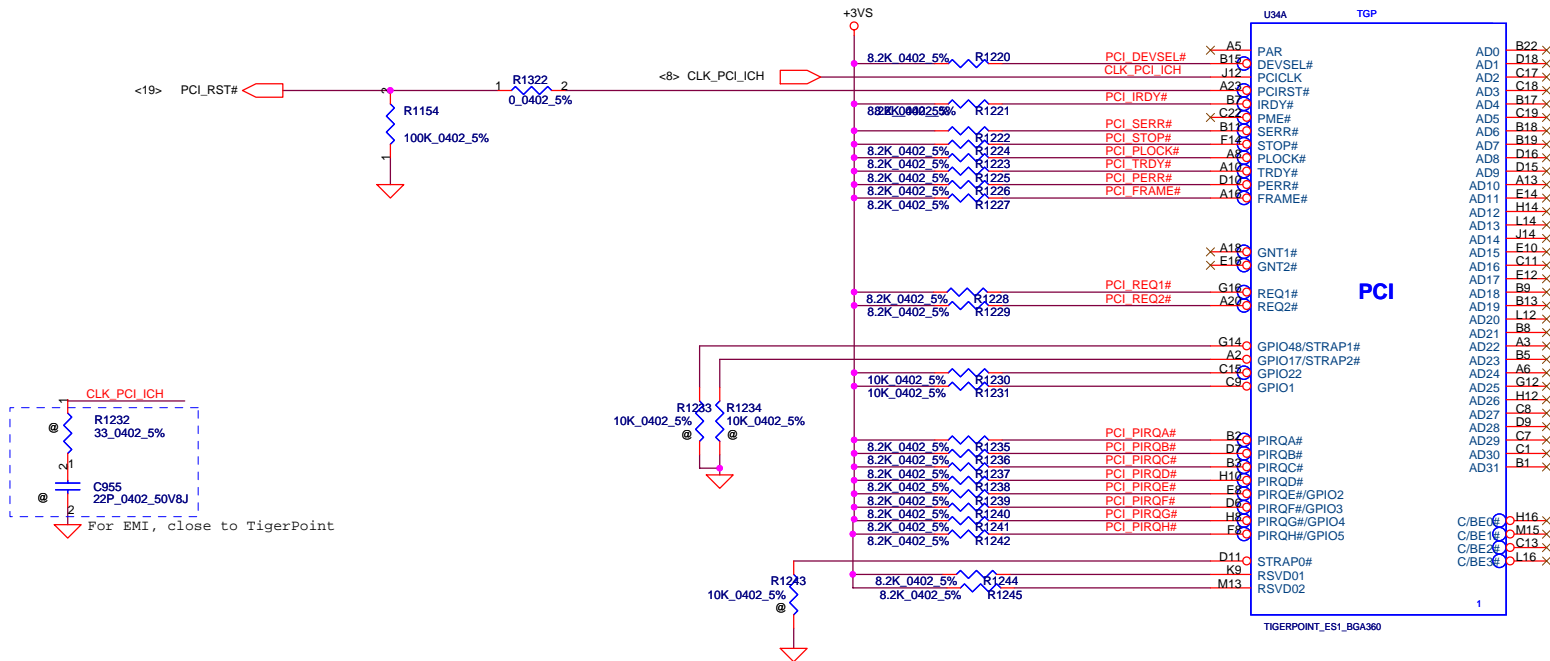
LCD/PANEL BD. Conn.



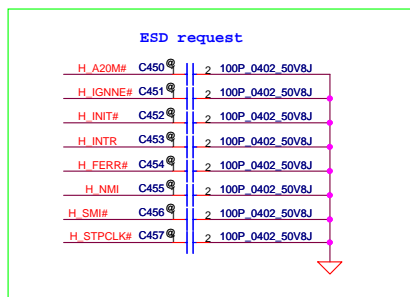
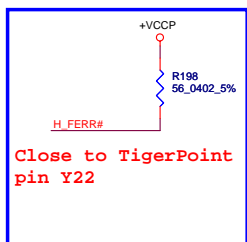
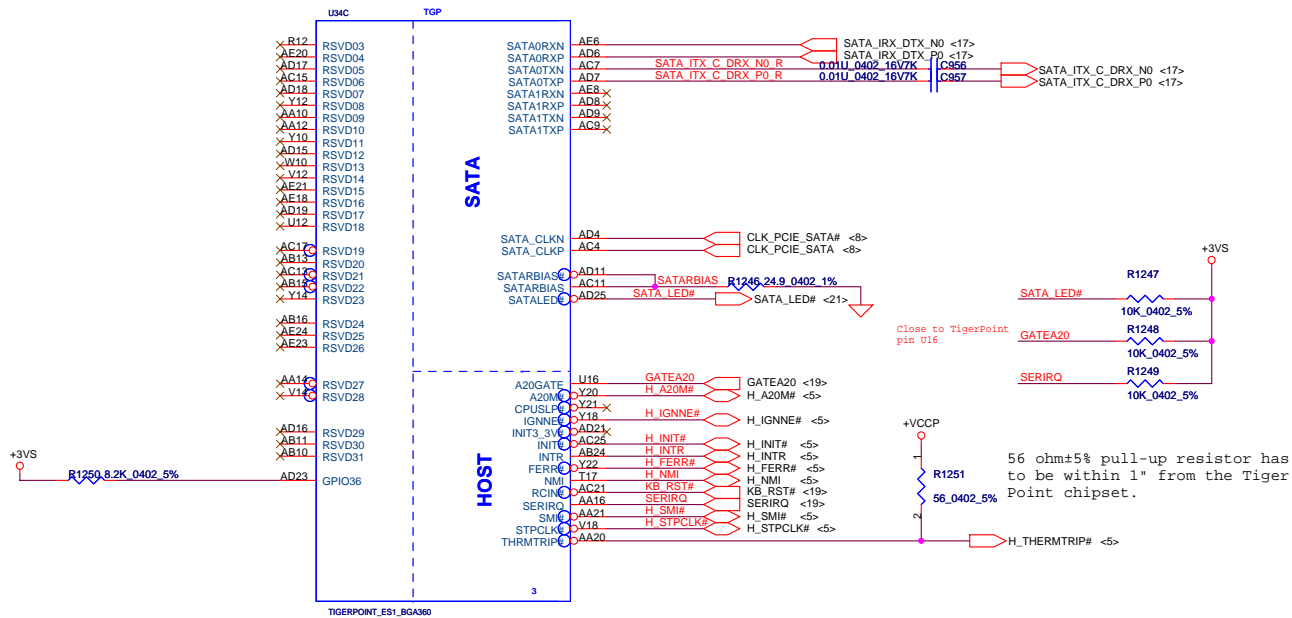
2009-08-17 modify



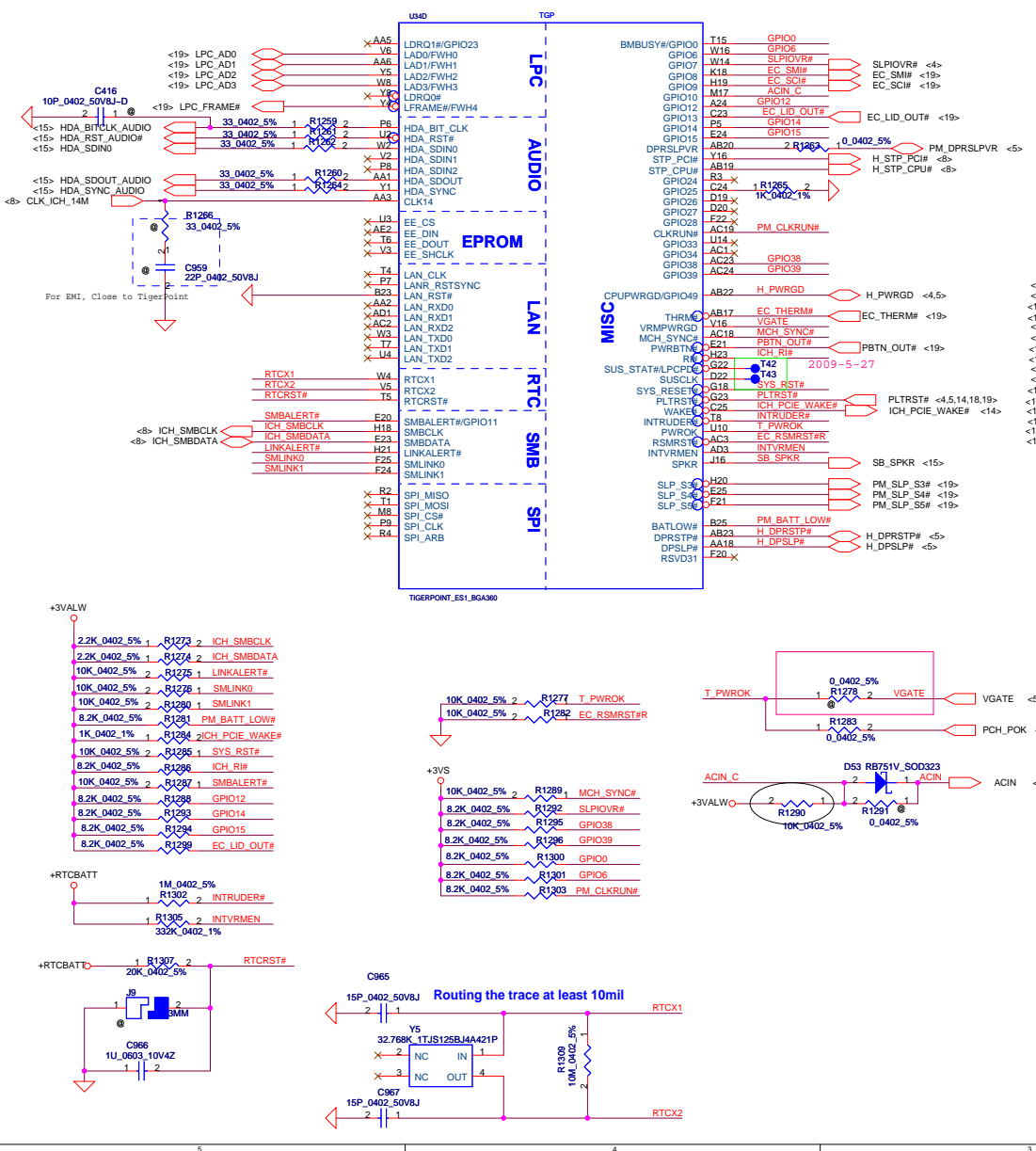
Security Classification		Compal Secret Data		Compal Electronics, Inc.	
Issued Date	2009/03/25	Deciphered Date	2009/06/22	Title	
THIS SHEET OF ENGINEERING DRAWING IS THE PROPRIETARY PROPERTY OF COMPAL ELECTRONICS, INC. AND CONTAINS CONFIDENTIAL AND TRADE SECRET INFORMATION. THIS SHEET MAY NOT BE TRANSFERRED FROM THE CUSTODY OF THE COMPETENT DIVISION OF R&D DEPARTMENT EXCEPT AS AUTHORIZED BY COMPAL ELECTRONICS, INC. NEITHER THIS SHEET NOR THE INFORMATION IT CONTAINS MAY BE USED BY OR DISCLOSED TO ANY THIRD PARTY WITHOUT PRIOR WRITTEN CONSENT OF COMPAL ELECTRONICS, INC.				Size	Document Number
				401784	Rev A
				Date:	Wednesday, September 16, 2009
				Sheet	9 of 33



Security Classification		Compal Secret Data		Compal Electronics, Inc.	
Issued Date	2009/03/25	Deciphered Date	2009/06/22	Title	
THIS SHEET OF ENGINEERING DRAWING IS THE PROPRIETARY PROPERTY OF COMPAL ELECTRONICS, INC. AND CONTAINS CONFIDENTIAL AND TRADE SECRET INFORMATION. THIS SHEET MAY NOT BE TRANSFERRED FROM THE CUSTODY OF THE COMPETENT DIVISION OF R&D DEPARTMENT EXCEPT AS AUTHORIZED BY COMPAL ELECTRONICS, INC. NEITHER THIS SHEET NOR THE INFORMATION IT CONTAINS MAY BE USED BY OR DISCLOSED TO ANY THIRD PARTY WITHOUT PRIOR WRITTEN CONSENT OF COMPAL ELECTRONICS, INC.				SCHEMATIC, MB A5732	
Size		Document Number			Rev
		401784			A
Date:		Wednesday, September 16, 2009		Sheet	10 of 33



Security Classification	Compal Secret Data			Compal Electronics, Inc.		
Issued Date	2009/03/25	Deciphered Date	2009/06/22	Title		
THIS SHEET OF ENGINEERING DRAWING IS THE PROPRIETARY PROPERTY OF COMPAL ELECTRONICS, INC. AND CONTAINS CONFIDENTIAL AND TRADE SECRET INFORMATION. THIS SHEET MAY NOT BE TRANSFERRED FROM THE CUSTODY OF THE COMPETENT DIVISION OF R&D DEPARTMENT EXCEPT AS AUTHORIZED BY COMPAL ELECTRONICS, INC. NEITHER THIS SHEET NOR THE INFORMATION IT CONTAINS MAY BE USED BY OR DISCLOSED TO ANY THIRD PARTY WITHOUT PRIOR WRITTEN CONSENT OF COMPAL ELECTRONICS, INC.				Size	Document Number	Rev
					401784	A
				Date:	Wednesday, September 16, 2009	Sheet 11 of 33



2009-08-24 modify

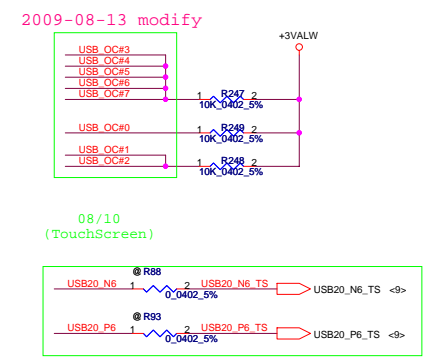
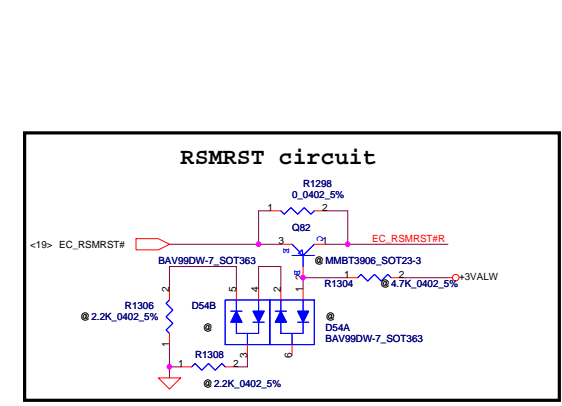
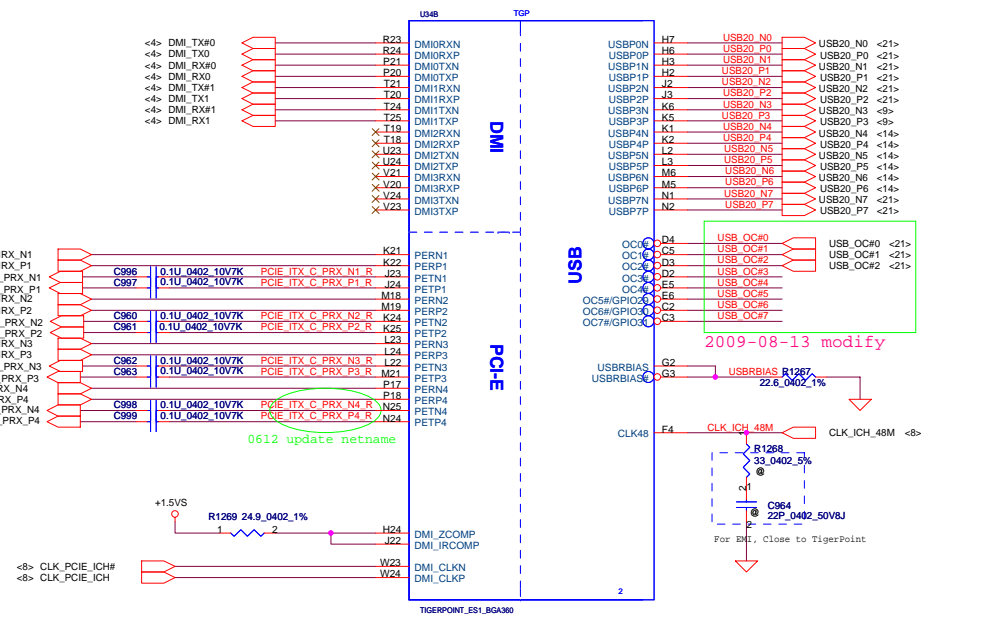
2009-08-24 modify

PCIe Port List	
1	LAN
2	WLAN
3	WWAN
4	Broadcom

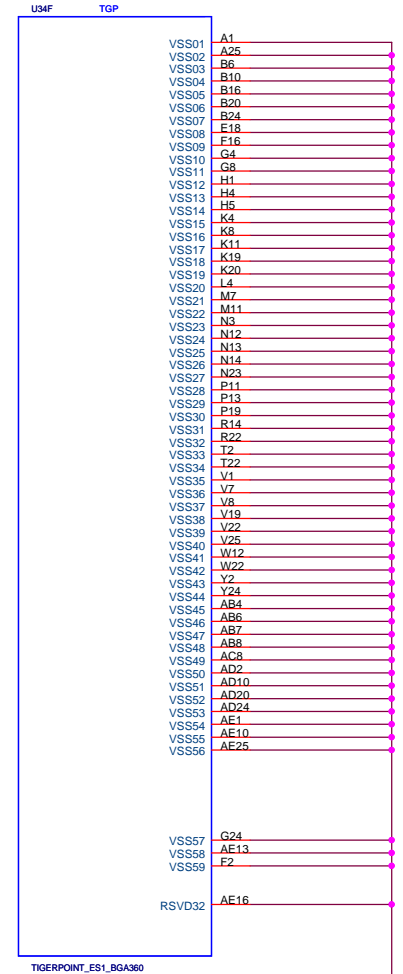
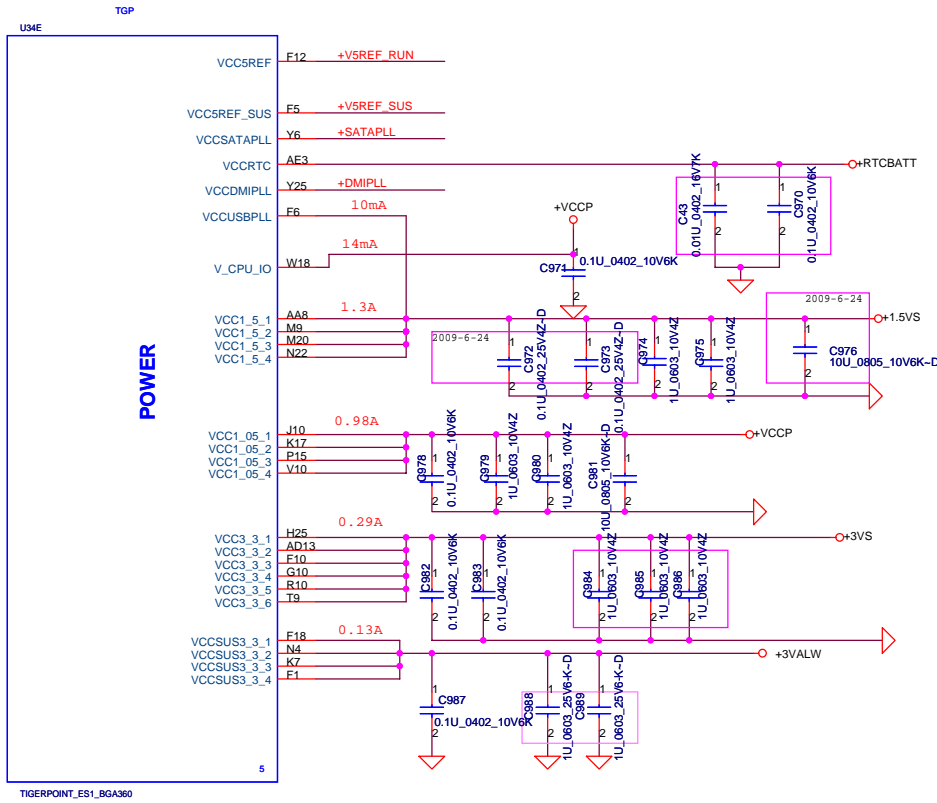
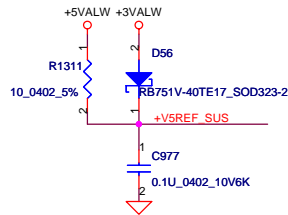
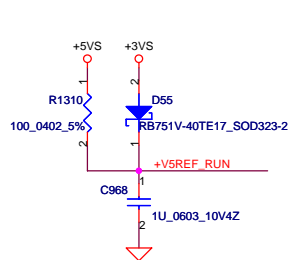
2009-08-13 modify

2009-08-13 modify

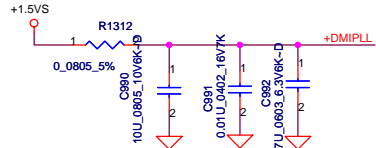
USB Port List	
0	USB1(Right)
1	USB2(Left)
2	USB3(Left)
3	Camera
4	WWAN
5	BT
6	WLAN
7	CardReader



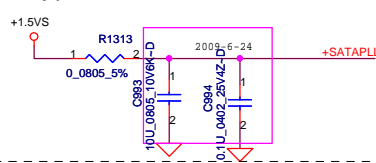
Security Classification		Compal Secret Data		Title	
Issued Date	2009/03/25	Deciphered Date	2009/06/22	Compal Electronics, Inc.	
THIS SHEET OF ENGINEERING DRAWING IS THE PROPRIETARY PROPERTY OF COMPAL ELECTRONICS, INC. AND CONTAINS CONFIDENTIAL AND TRADE SECRET INFORMATION. THIS SHEET MAY NOT BE TRANSFERRED FROM THE CUSTODY OF THE COMPETENT DIVISION OF R&D DEPARTMENT EXCEPT AS AUTHORIZED BY COMPAL ELECTRONICS, INC. NEITHER THIS SHEET NOR THE INFORMATION IT CONTAINS MAY BE USED BY OR DISCLOSED TO ANY THIRD PARTY WITHOUT PRIOR WRITTEN CONSENT OF COMPAL ELECTRONICS, INC.				SCHEMATIC, MB A5732	
Size		Document Number		401784	
Customer		Rev		A	
Date		Wednesday, September 16, 2009		Sheet 12 of 33	



Place closely pin Y25 within 100mls.

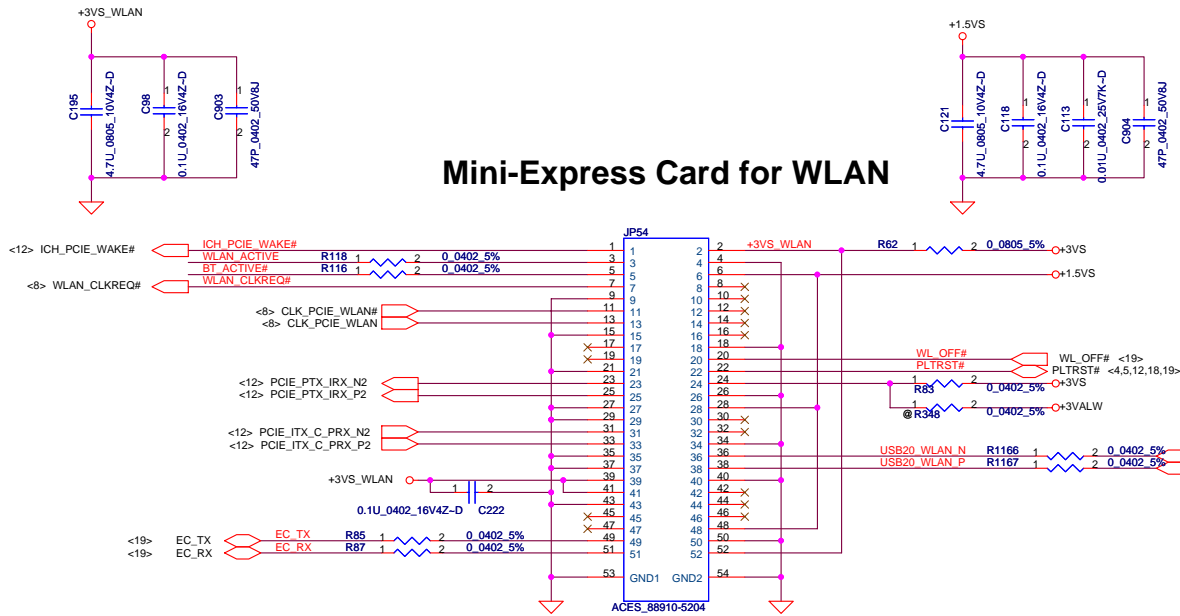


Place closely pin Y6 within 100mls.

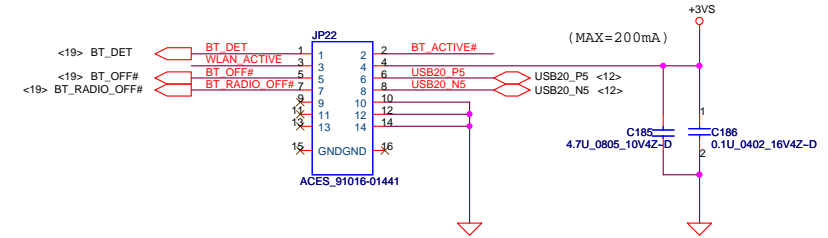


Security Classification		Compal Secret Data		Compal Electronics, Inc.	
Issued Date	2009/03/25	Deciphered Date	2009/06/22	Title	
THIS SHEET OF ENGINEERING DRAWING IS THE PROPRIETARY PROPERTY OF COMPAL ELECTRONICS, INC. AND CONTAINS CONFIDENTIAL AND TRADE SECRET INFORMATION. THIS SHEET MAY NOT BE TRANSFERRED FROM THE CUSTODY OF THE COMPETENT DIVISION OF R&D DEPARTMENT EXCEPT AS AUTHORIZED BY COMPAL ELECTRONICS, INC. NEITHER THIS SHEET NOR THE INFORMATION IT CONTAINS MAY BE USED BY OR DISCLOSED TO ANY THIRD PARTY WITHOUT PRIOR WRITTEN CONSENT OF COMPAL ELECTRONICS, INC.				SCHEMATIC, MB A5732	
Size	Custom	Document Number	401784	Rev	A
Date:	Wednesday, September 16, 2009	Sheet	13	of	33

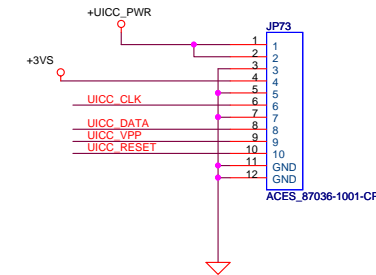
Mini-Express Card for WLAN



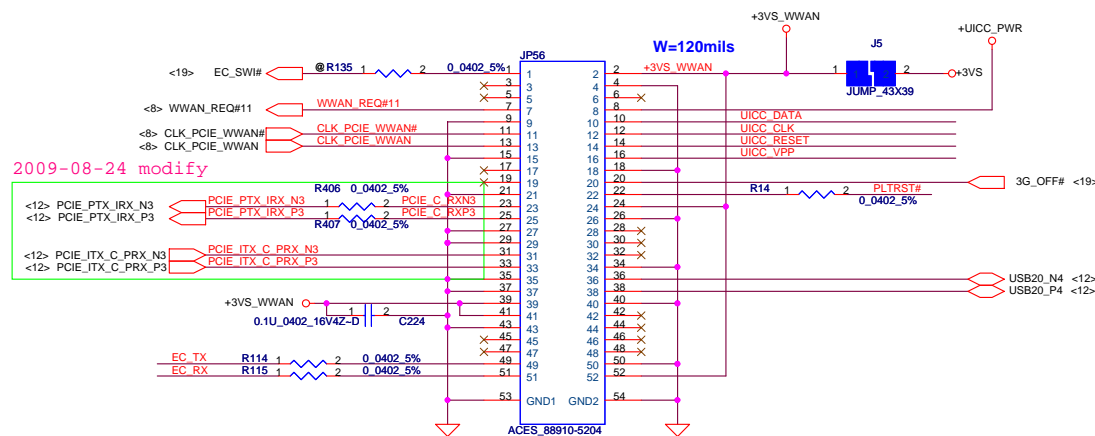
BlueTooth Interface



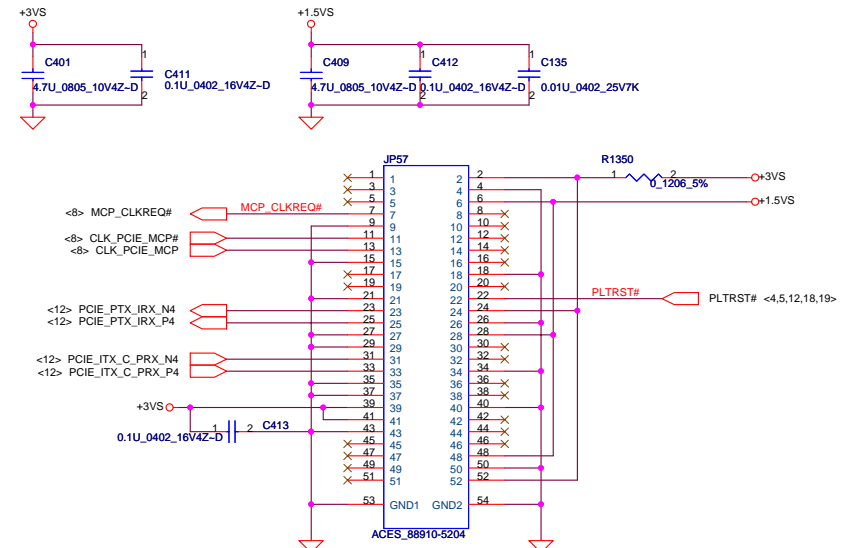
SIM Interface



Mini-Express Card for WWAN



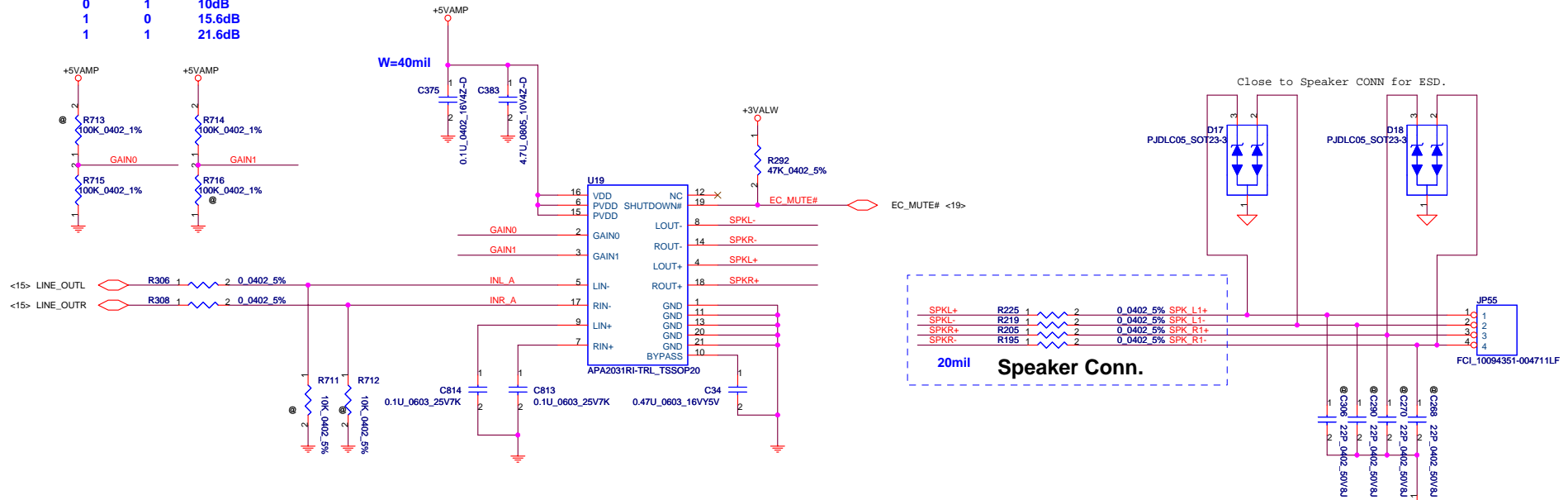
Mini-Express Card for Broadcom MCP



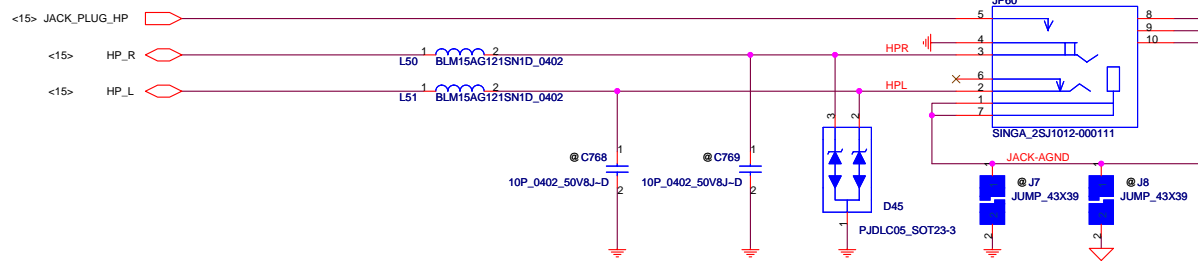
Security Classification		Compal Secret Data		Title	
Issued Date	2009/03/25	Deciphered Date	2009/06/22	Compal Electronics, Inc.	
THIS SHEET OF ENGINEERING DRAWING IS THE PROPRIETARY PROPERTY OF COMPAL ELECTRONICS, INC. AND CONTAINS CONFIDENTIAL AND TRADE SECRET INFORMATION. THIS SHEET MAY NOT BE TRANSFERRED FROM THE CUSTODY OF THE COMPETENT DIVISION OF R&D DEPARTMENT EXCEPT AS AUTHORIZED BY COMPAL ELECTRONICS, INC. NEITHER THIS SHEET NOR THE INFORMATION IT CONTAINS MAY BE USED BY OR DISCLOSED TO ANY THIRD PARTY WITHOUT PRIOR WRITTEN CONSENT OF COMPAL ELECTRONICS, INC.				SCHEMATIC, MB A5732	
				Size	Document Number
				401784	
				Date	Wednesday, September 16, 2009
				Sheet	14 of 33

APA2031A SPK Amplifier

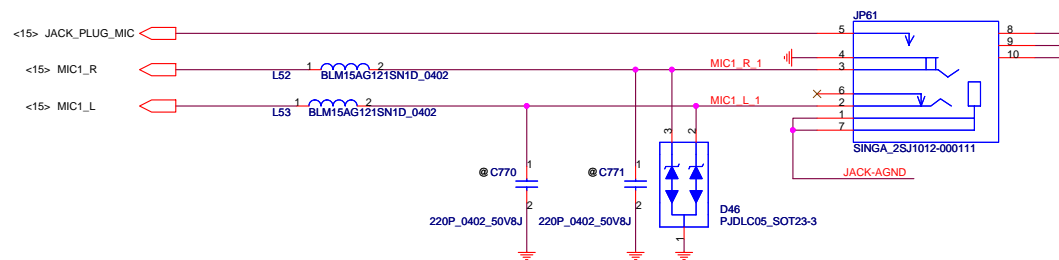
GAIN0	GAIN1	
0	0	6dB
0	1	10dB
1	0	15.6dB
1	1	21.6dB



HeadPhone JACK

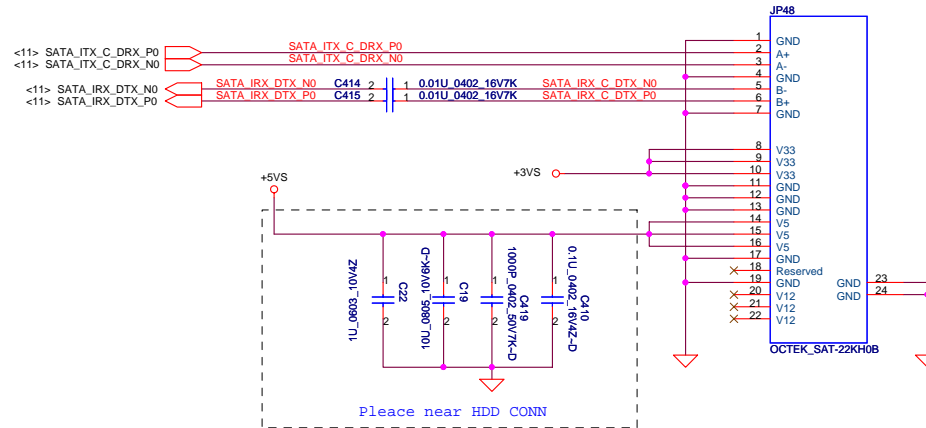


Ext.MIC JACK

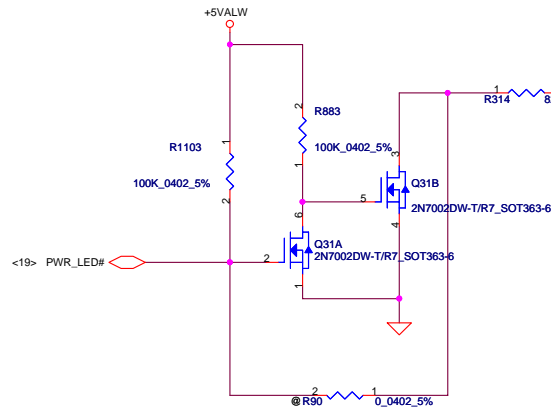


Security Classification	Compal Secret Data		Title	
Issued Date	2009/03/25	Deciphered Date	2009/06/22	SCHEMATIC, MB A5732
THIS SHEET OF ENGINEERING DRAWING IS THE PROPRIETARY PROPERTY OF COMPAL ELECTRONICS, INC. AND CONTAINS CONFIDENTIAL AND TRADE SECRET INFORMATION. THIS SHEET MAY NOT BE TRANSFERRED FROM THE CUSTODY OF THE COMPETENT DIVISION OF R&D DEPARTMENT EXCEPT AS AUTHORIZED BY COMPAL ELECTRONICS, INC. NEITHER THIS SHEET NOR THE INFORMATION IT CONTAINS MAY BE USED BY OR DISCLOSED TO ANY THIRD PARTY WITHOUT PRIOR WRITTEN CONSENT OF COMPAL ELECTRONICS, INC.				Size Custom
				Document Number 401784
				Date: Wednesday, September 16, 2009
				Sheet 16 of 33
				Rev A

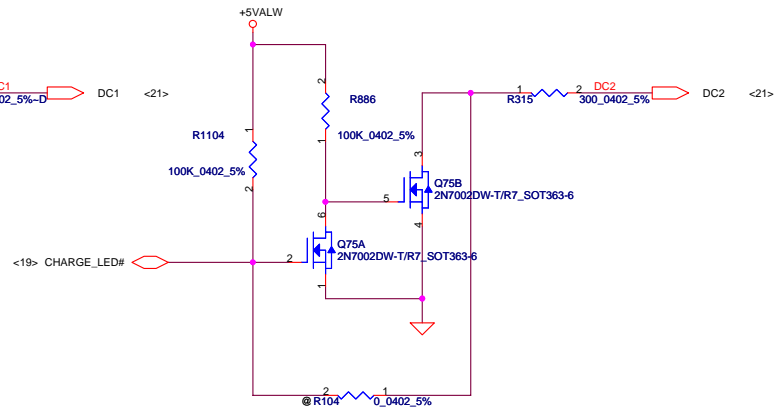
For SATA HDD



POWER LED

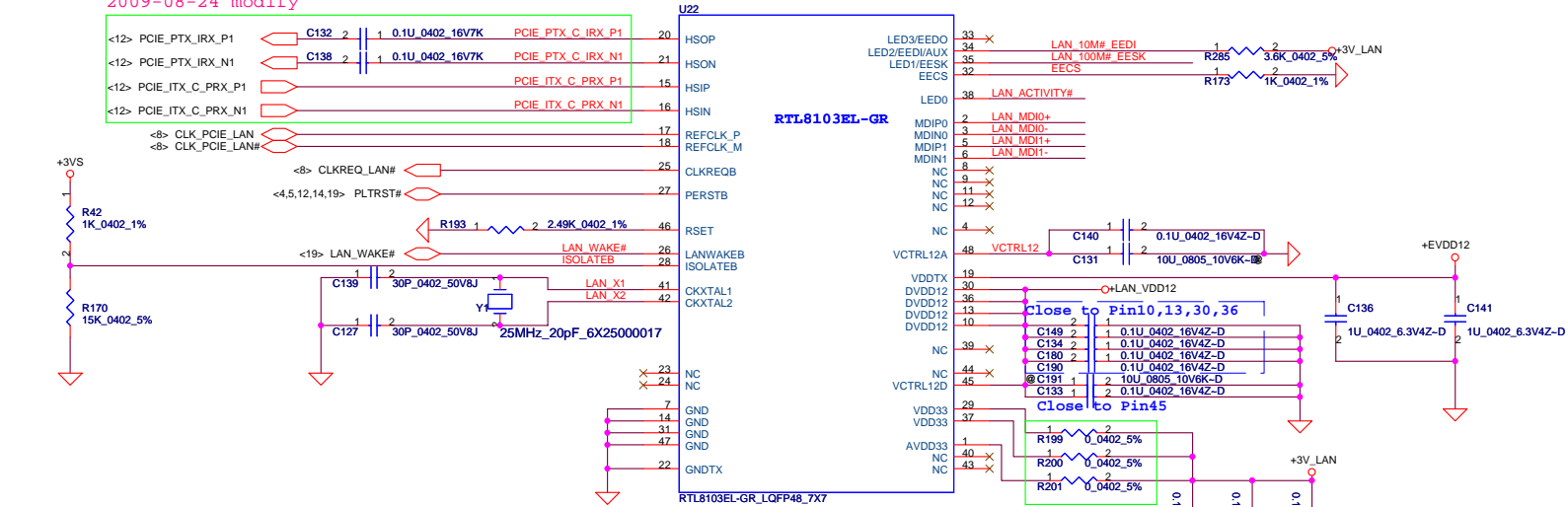


BATT CHARGE LED

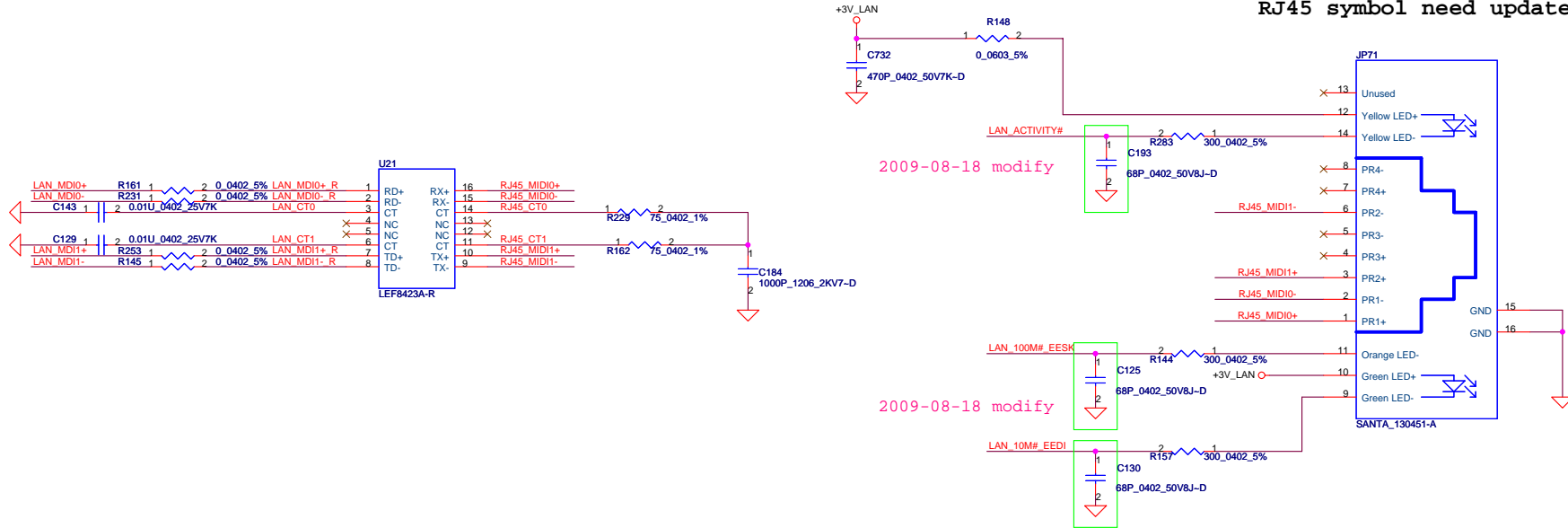


Security Classification		Compal Secret Data		Compal Electronics, Inc.	
Issued Date	2009/03/25	Deciphered Date	2009/06/22	Title	
THIS SHEET OF ENGINEERING DRAWING IS THE PROPRIETARY PROPERTY OF COMPAL ELECTRONICS, INC. AND CONTAINS CONFIDENTIAL AND TRADE SECRET INFORMATION. THIS SHEET MAY NOT BE TRANSFERRED FROM THE CUSTODY OF THE COMPETENT DIVISION OF R&D DEPARTMENT EXCEPT AS AUTHORIZED BY COMPAL ELECTRONICS, INC. NEITHER THIS SHEET NOR THE INFORMATION IT CONTAINS MAY BE USED BY OR DISCLOSED TO ANY THIRD PARTY WITHOUT PRIOR WRITTEN CONSENT OF COMPAL ELECTRONICS, INC.				Size Custom	Document Number
				Date: Wednesday, September 16, 2009	Rev A
				Sheet 17 of 33	401784

2009-08-24 modify

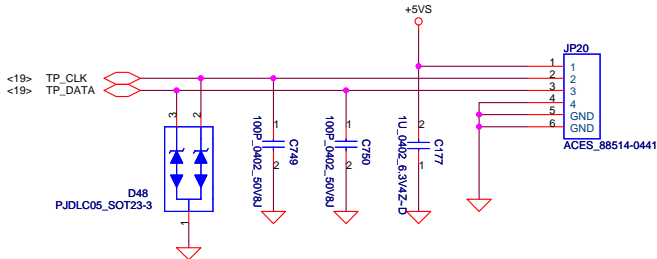


RJ45 symbol need update



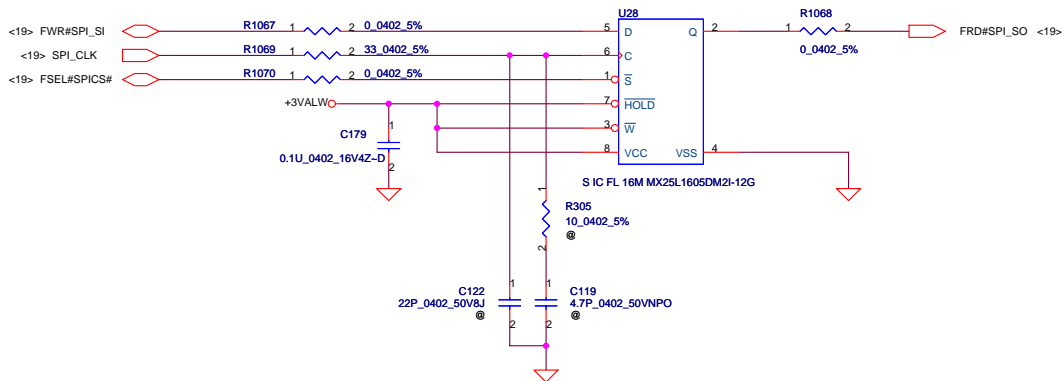
Security Classification		Compal Secret Data		Compal Electronics, Inc.		
Issued Date	2009/03/25	Deciphered Date	2009/06/22	Title		
THIS SHEET OF ENGINEERING DRAWING IS THE PROPRIETARY PROPERTY OF COMPAL ELECTRONICS, INC. AND CONTAINS CONFIDENTIAL AND TRADE SECRET INFORMATION. THIS SHEET MAY NOT BE TRANSFERRED FROM THE CUSTODY OF THE COMPETENT DIVISION OF R&D DEPARTMENT EXCEPT AS AUTHORIZED BY COMPAL ELECTRONICS, INC. NEITHER THIS SHEET NOR THE INFORMATION IT CONTAINS MAY BE USED BY OR DISCLOSED TO ANY THIRD PARTY WITHOUT PRIOR WRITTEN CONSENT OF COMPAL ELECTRONICS, INC.				SCHEMATIC, MB A5732		
				Size	Document Number	Rev
				Custom	401784	A
				Date:	Wednesday, September 16, 2009	Sheet 18 of 33

Touch/B Connector

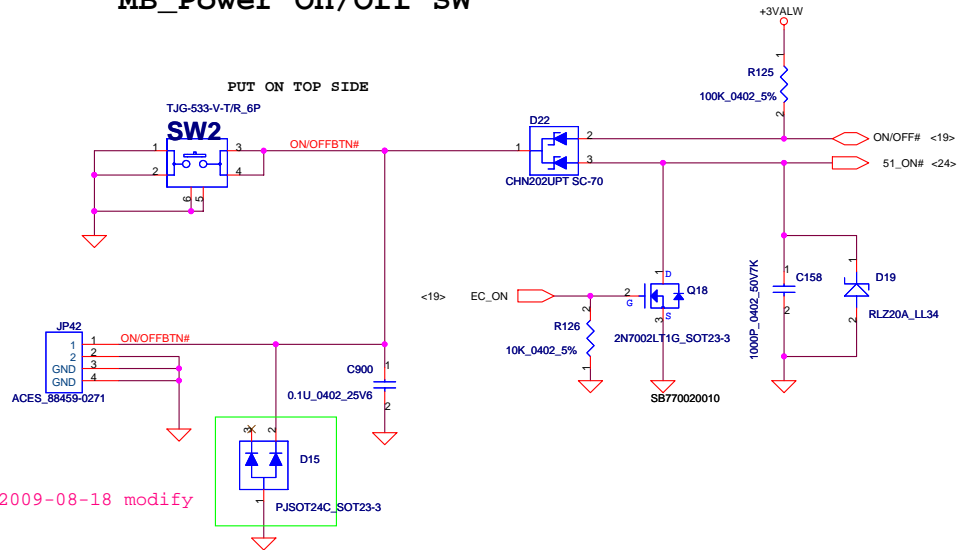


Need to create symbol and footprint for MX SPI ROM

System SPI Flash ROM (16Mb)



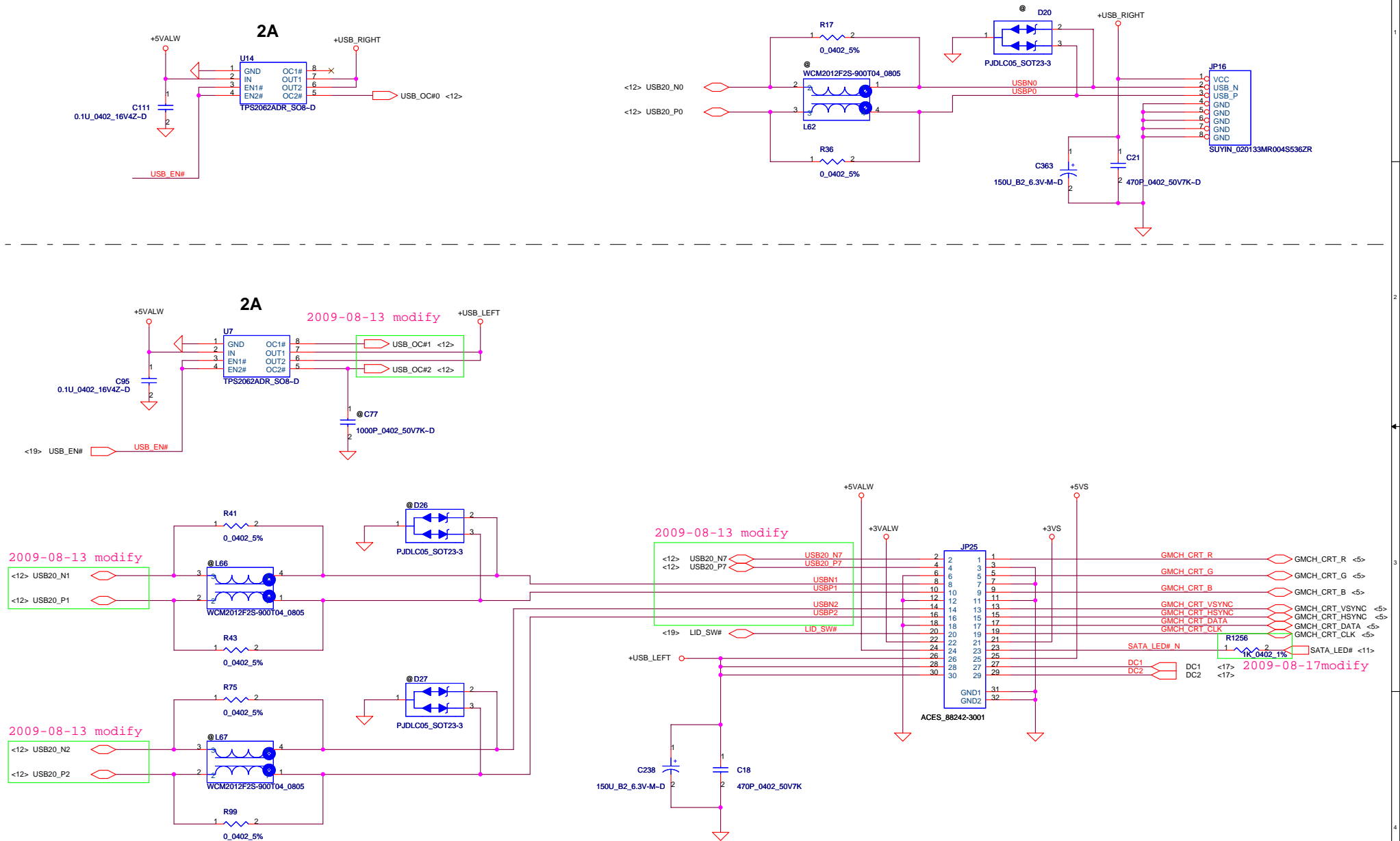
MB_Power On/Off SW



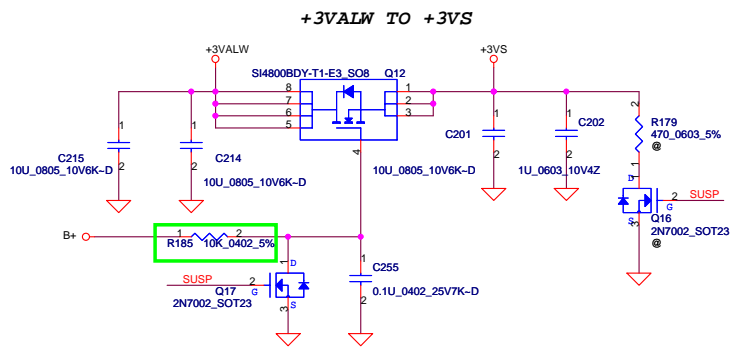
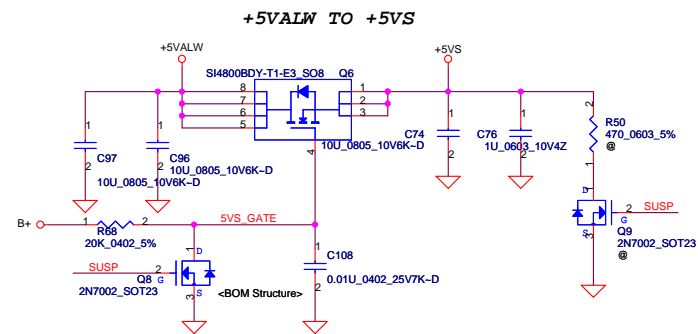
2009-08-18 modify

Security Classification	Compal Secret Data			Compal Electronics, Inc.		
Issued Date	2009/03/25	Deciphered Date	2009/06/22	Title	SCHEMATIC, MB A5732	
THIS SHEET OF ENGINEERING DRAWING IS THE PROPRIETARY PROPERTY OF COMPAL ELECTRONICS, INC. AND CONTAINS CONFIDENTIAL AND TRADE SECRET INFORMATION. THIS SHEET MAY NOT BE TRANSFERRED FROM THE CUSTODY OF THE COMPETENT DIVISION OF RAD DEPARTMENT EXCEPT AS AUTHORIZED BY COMPAL ELECTRONICS, INC. NEITHER THIS SHEET NOR THE INFORMATION IT CONTAINS MAY BE USED BY OR DISCLOSED TO ANY THIRD PARTY WITHOUT PRIOR WRITTEN CONSENT OF COMPAL ELECTRONICS, INC.				Size	Document Number	Rev
				Custom	401784	A
				Date:	Wednesday, September 16, 2009	Sheet

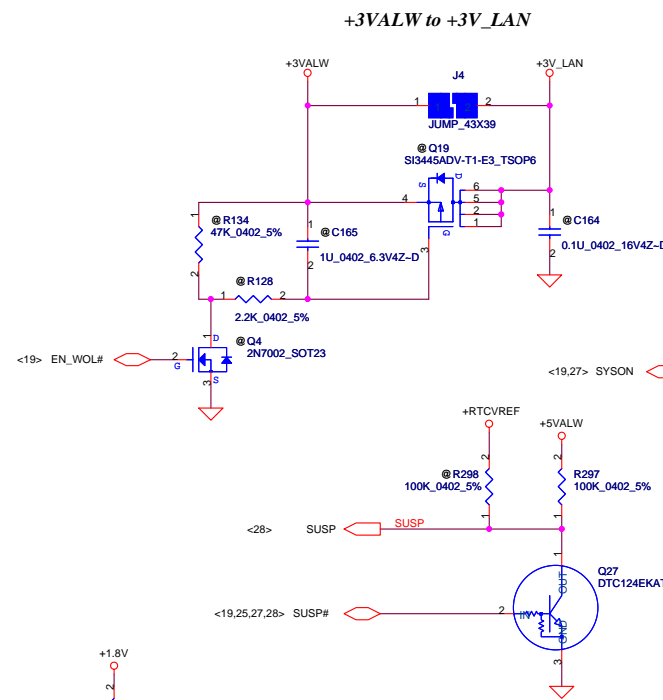
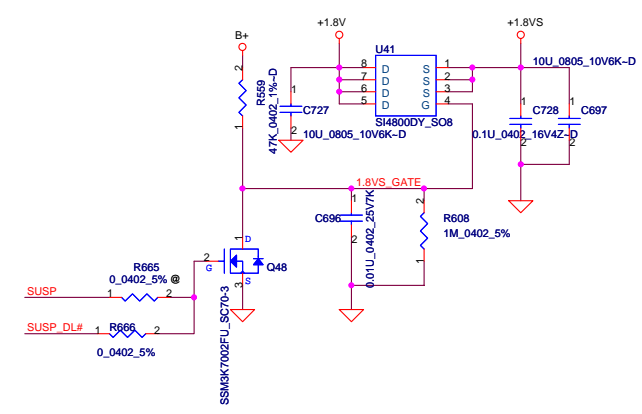
On Board USB Connector



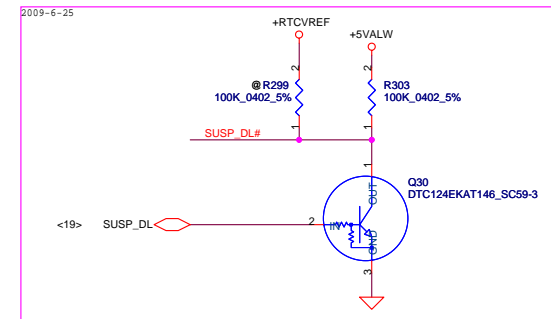
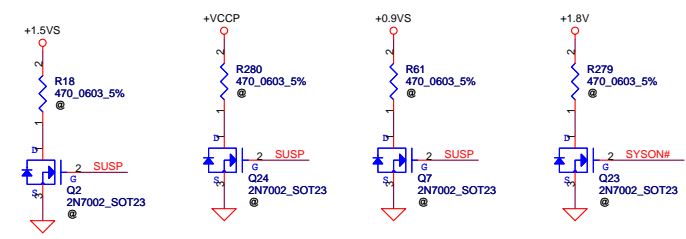
Security Classification		Compal Secret Data		Compal Electronics, Inc.	
Issued Date	2009/03/25	Deciphered Date	2009/06/22	Title	
THIS SHEET OF ENGINEERING DRAWING IS THE PROPRIETARY PROPERTY OF COMPAL ELECTRONICS, INC. AND CONTAINS CONFIDENTIAL AND TRADE SECRET INFORMATION. THIS SHEET MAY NOT BE TRANSFERRED FROM THE CUSTODY OF THE COMPETENT DIVISION OF R&D DEPARTMENT EXCEPT AS AUTHORIZED BY COMPAL ELECTRONICS, INC. NEITHER THIS SHEET NOR THE INFORMATION IT CONTAINS MAY BE USED BY OR DISCLOSED TO ANY THIRD PARTY WITHOUT PRIOR WRITTEN CONSENT OF COMPAL ELECTRONICS, INC.				SCHEMATIC, MB A5732	
Size	Custom	Document Number	401784	Rev	A
Date:	Wednesday, September 16, 2009	Sheet	21	of	33



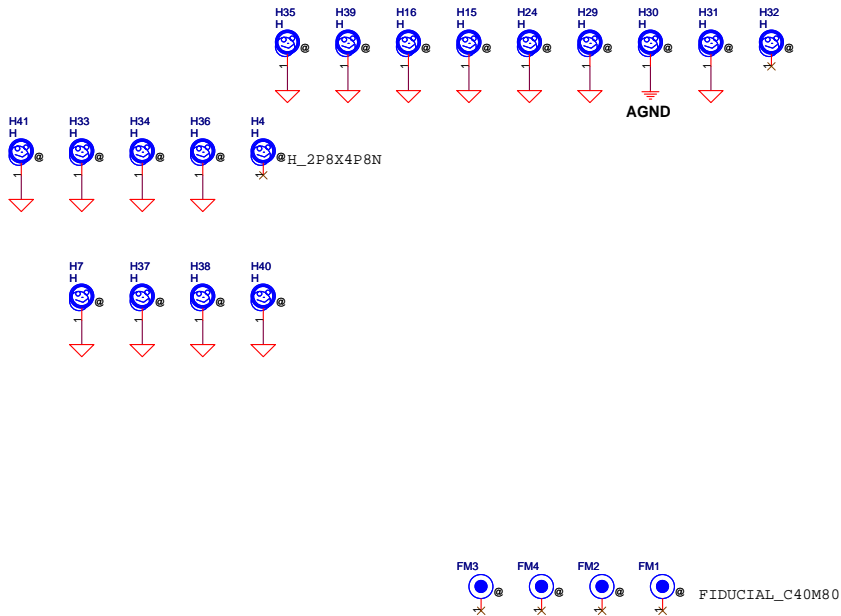
+1.8V to +1.8VS Transfer



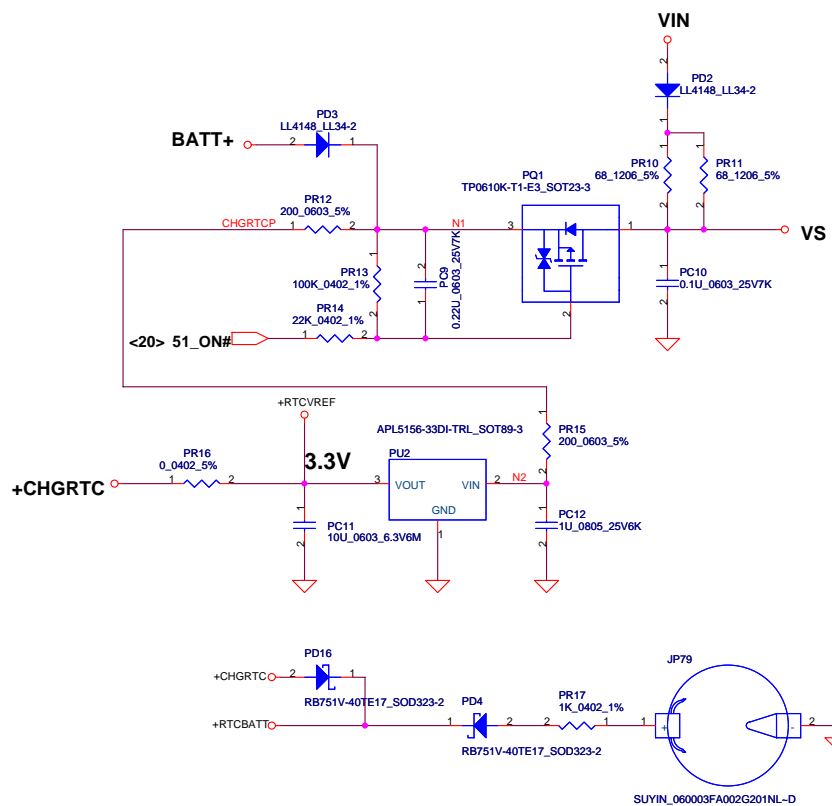
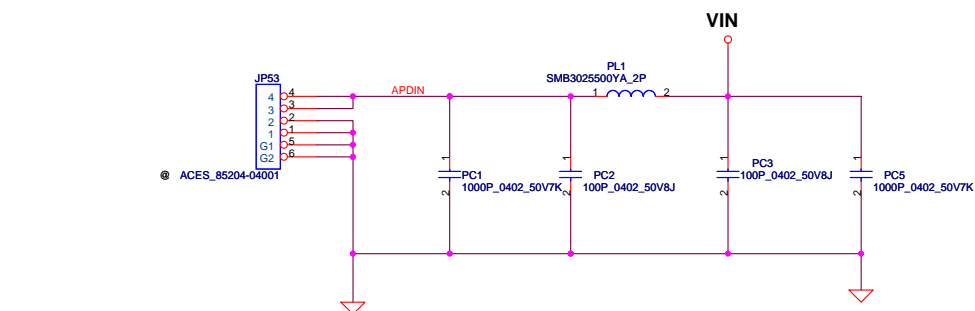
If the +1.8V discharge circuit is pop, R302, Q28 need pop.



Security Classification		Compal Secret Data		Compal Electronics, Inc.	
Issued Date	2009/03/25	Deciphered Date	2009/06/22	Title	
THIS SHEET OF ENGINEERING DRAWING IS THE PROPRIETARY PROPERTY OF COMPAL ELECTRONICS, INC. AND CONTAINS CONFIDENTIAL AND TRADE SECRET INFORMATION. THIS SHEET MAY NOT BE TRANSFERRED FROM THE CUSTODY OF THE COMPETENT DIVISION OF R&D DEPARTMENT EXCEPT AS AUTHORIZED BY COMPAL ELECTRONICS, INC. NEITHER THIS SHEET NOR THE INFORMATION IT CONTAINS MAY BE USED BY OR DISCLOSED TO ANY THIRD PARTY WITHOUT PRIOR WRITTEN CONSENT OF COMPAL ELECTRONICS, INC.				Size	Document Number
				Custom	401784
				Date:	Wednesday, September 16, 2009
				Sheet	22 of 33

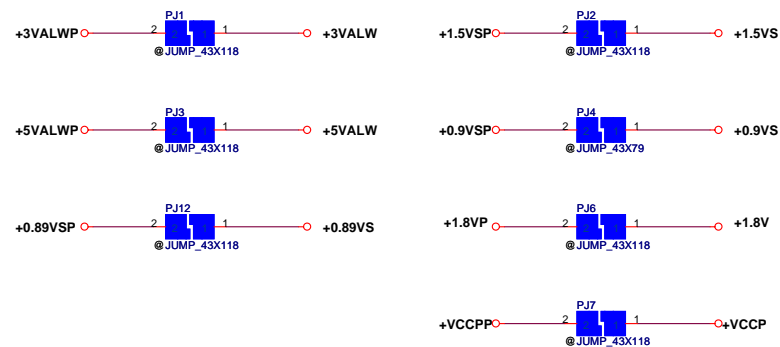
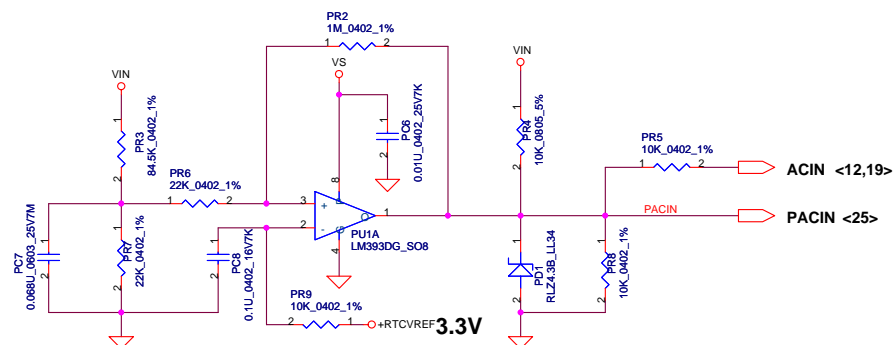


Security Classification	Compal Secret Data			Compal Electronics, Inc.	
Issued Date	2009/03/25	Deciphered Date	2009/06/22	Title	
THIS SHEET OF ENGINEERING DRAWING IS THE PROPRIETARY PROPERTY OF COMPAL ELECTRONICS, INC. AND CONTAINS CONFIDENTIAL AND TRADE SECRET INFORMATION. THIS SHEET MAY NOT BE TRANSFERRED FROM THE CUSTODY OF THE COMPETENT DIVISION OF R&D DEPARTMENT EXCEPT AS AUTHORIZED BY COMPAL ELECTRONICS, INC. NEITHER THIS SHEET NOR THE INFORMATION IT CONTAINS MAY BE USED BY OR DISCLOSED TO ANY THIRD PARTY WITHOUT PRIOR WRITTEN CONSENT OF COMPAL ELECTRONICS, INC.				Size	Document Number
				Custom	401784
Date: Wednesday, September 16, 2009				Sheet	23 of 33

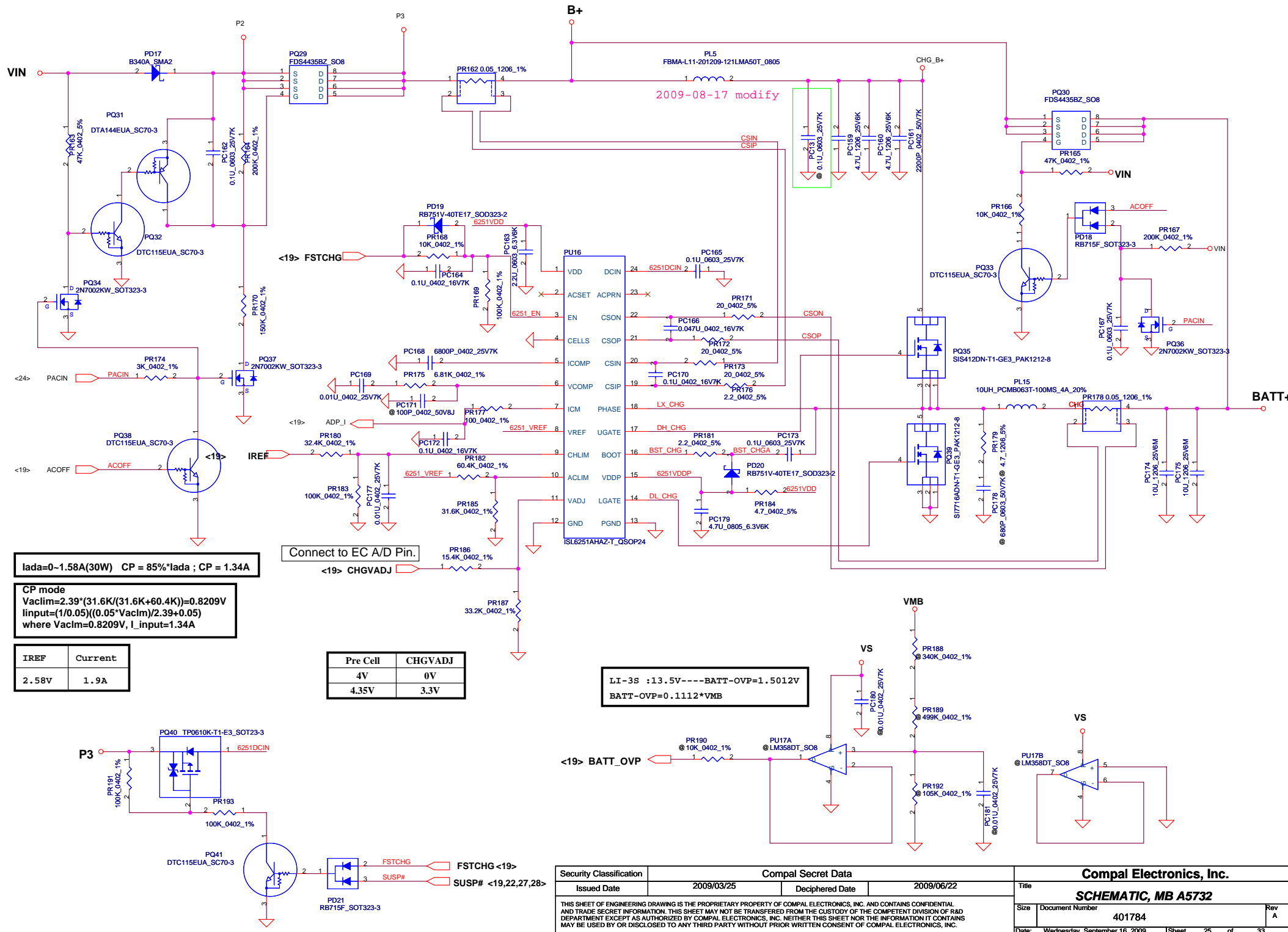


Vin Detector

High 17.944 17.706 17.470
Low 16.242 16.027 15.808



Security Classification	Compal Secret Data		Compal Electronics, Inc.	
Issued Date	2009/03/25	Deciphered Date	2009/06/22	Title
THIS SHEET OF ENGINEERING DRAWING IS THE PROPRIETARY PROPERTY OF COMPAL ELECTRONICS, INC. AND CONTAINS CONFIDENTIAL AND TRADE SECRET INFORMATION. THIS SHEET MAY NOT BE TRANSFERRED FROM THE CUSTODY OF THE COMPETENT DIVISION OF R&D DEPARTMENT EXCEPT AS AUTHORIZED BY COMPAL ELECTRONICS, INC. NEITHER THIS SHEET NOR THE INFORMATION IT CONTAINS MAY BE USED BY OR DISCLOSED TO ANY THIRD PARTY WITHOUT PRIOR WRITTEN CONSENT OF COMPAL ELECTRONICS, INC.				SCHEMATIC, MB A5732
Size	Document Number	401784		Rev A
Date:	Wednesday, September 16, 2009	Sheet	24	of 33



Iada=0~1.58A(30W) CP = 85%*Iada ; CP = 1.34A

CP mode
Vaclim=2.39*(31.6K/(31.6K+60.4K))=0.8209V
input=(1/0.05)*((0.05*Vaclim)/2.39+0.05)
where Vaclim=0.8209V, I_input=1.34A

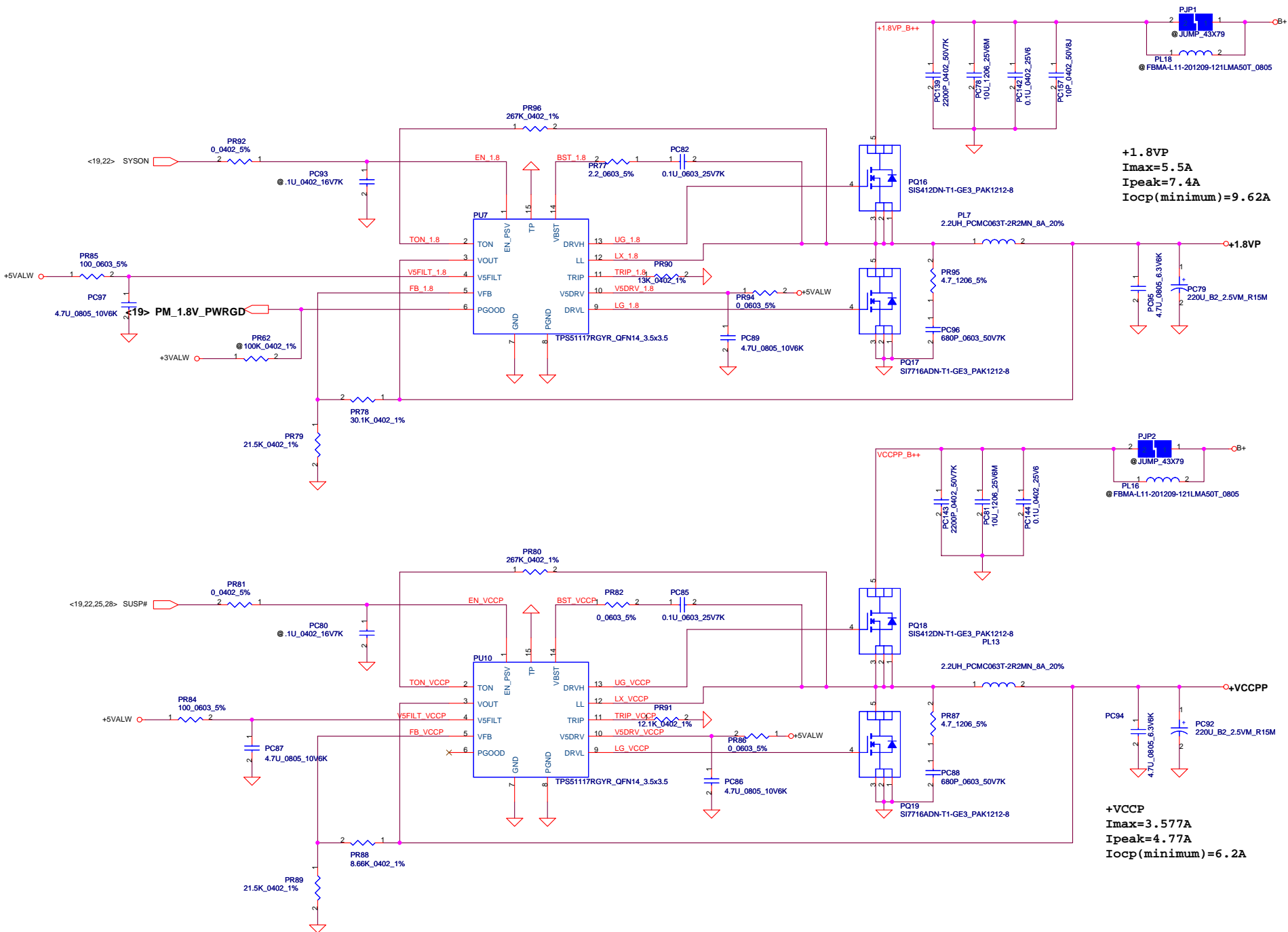
IREF	Current
2.58V	1.9A

Connect to EC A/D Pin.

Pre Cell	CHGVADJ
4V	0V
4.35V	3.3V

LI-3S :13.5V----BATT-OVP=1.5012V
BATT-OVP=0.1112*VMB

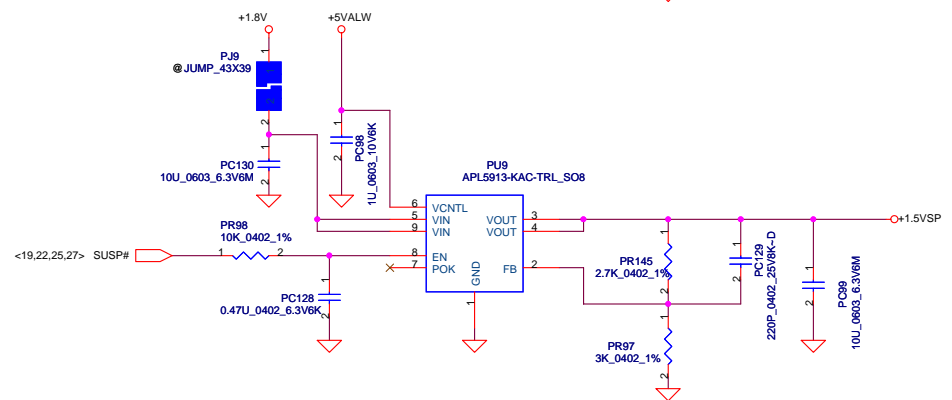
Security Classification		Compal Secret Data				Compal Electronics, Inc.					
Issued Date		2009/03/25		Deciphered Date		2009/06/22		Title			
THIS SHEET OF ENGINEERING DRAWING IS THE PROPRIETARY PROPERTY OF COMPAL ELECTRONICS, INC. AND CONTAINS CONFIDENTIAL AND TRADE SECRET INFORMATION. THIS SHEET MAY NOT BE TRANSFERRED FROM THE CUSTODY OF THE COMPETENT DIVISION OF R&D DEPARTMENT EXCEPT AS AUTHORIZED BY COMPAL ELECTRONICS, INC. NEITHER THIS SHEET NOR THE INFORMATION IT CONTAINS MAY BE USED BY OR DISCLOSED TO ANY THIRD PARTY WITHOUT PRIOR WRITTEN CONSENT OF COMPAL ELECTRONICS, INC.						SCHEMATIC, MB A5732					
						Size		Document Number		Rev	
								401784		A	
						Date:		Wednesday, September 16, 2009		Sheet 25 of 33	



+1.8VP
I_{max}=5.5A
I_{peak}=7.4A
I_{ocp(minimum)}=9.62A

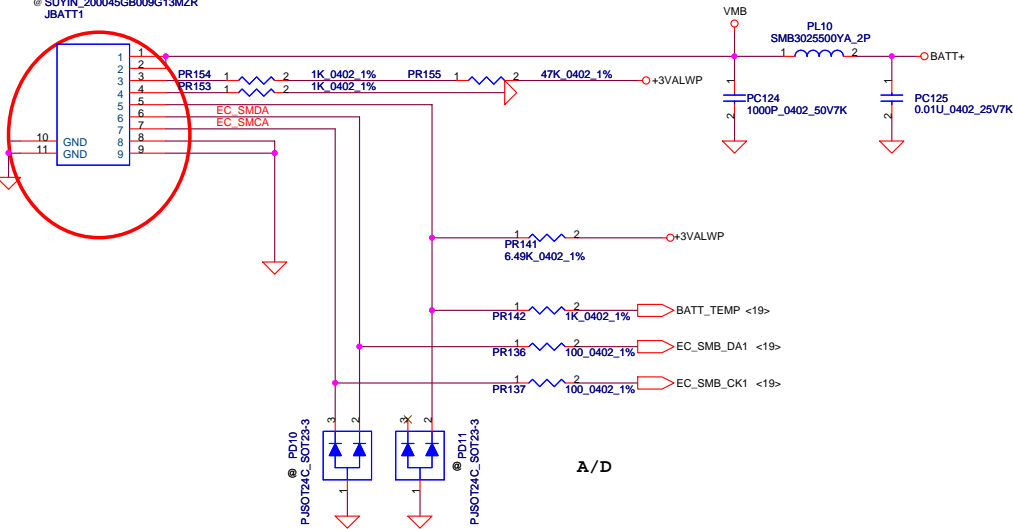
+VCCPP
I_{max}=3.577A
I_{peak}=4.77A
I_{ocp(minimum)}=6.2A

Security Classification		Compal Secret Data		Compal Electronics, Inc.				
Issued Date		2009/03/25	Deciphered Date	2009/06/22	Title	SCHEMATIC, MB A5732		
THIS SHEET OF ENGINEERING DRAWING IS THE PROPRIETARY PROPERTY OF COMPAL ELECTRONICS, INC. AND CONTAINS CONFIDENTIAL AND TRADE SECRET INFORMATION. THIS SHEET MAY NOT BE TRANSFERRED FROM THE CUSTODY OF THE COMPETENT DIVISION OF R&D DEPARTMENT EXCEPT AS AUTHORIZED BY COMPAL ELECTRONICS, INC. NEITHER THIS SHEET NOR THE INFORMATION IT CONTAINS MAY BE USED BY OR DISCLOSED TO ANY THIRD PARTY WITHOUT PRIOR WRITTEN CONSENT OF COMPAL ELECTRONICS, INC.					Size	Document Number		
					Custom	401784	Rev	A
					Date:	Wednesday, September 16, 2009	Sheet	27



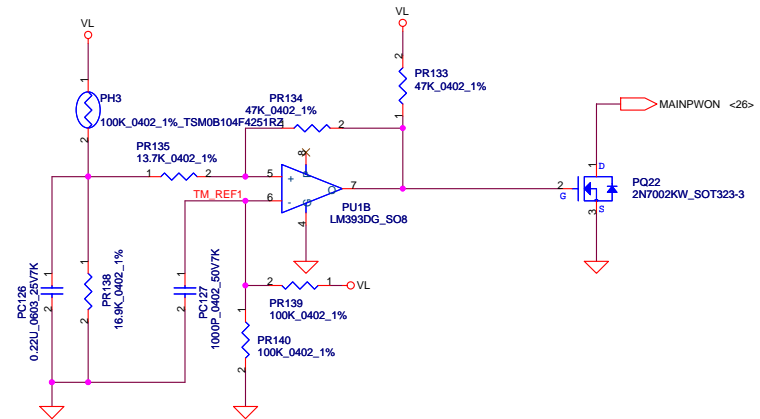
Compal Electronics, Inc.			
Title		SCHEMATIC, MB A5732	
Size	Document Number		Rev
Custom	401784		A
Date:	Wednesday, September 16, 2009	Sheet	28 of 33

@ SUYIN_200045GB009G13MZR
JBATT1



A/D

PH3 under CPU botten side :
CPU thermal protection at 90 degree C
Recovery at 50 degree C



Security Classification		Compal Secret Data				Compal Electronics, Inc.							
Issued Date		2009/03/25		Deciphered Date		2009/06/22		Title					
								SCHEMATIC, MB A5732					
THIS SHEET OF ENGINEERING DRAWING IS THE PROPRIETARY PROPERTY OF COMPAL ELECTRONICS, INC. AND CONTAINS CONFIDENTIAL AND TRADE SECRET INFORMATION. THIS SHEET MAY NOT BE TRANSFERRED FROM THE CUSTODY OF THE COMPETENT DIVISION OF R&D DEPARTMENT EXCEPT AS AUTHORIZED BY COMPAL ELECTRONICS, INC. NEITHER THIS SHEET NOR THE INFORMATION IT CONTAINS MAY BE USED BY OR DISCLOSED TO ANY THIRD PARTY WITHOUT PRIOR WRITTEN CONSENT OF COMPAL ELECTRONICS, INC.						Size		Document Number		Rev A			
						Custom		401784					
						Date:		Wednesday, September 16, 2009		Sheet	30	of	33

Version change list (P.I.R. List)

Item	Reason for change	Rev.	PG#	Modify List	Date	Phase
1	Reserve bead to prevent noise issue happen		P27, P28	Reserve PL16, PL17, PL18	2009.07.24	PT
2	EMI request add snubber to reduce power board band.		P26, P27 P28, P29	Change PR77, PR206 to 2.2_0603_5%. Add PR87, PR95, PR50, PR51, PR115 4.7_1206_5% into BOM. Add PC88, PC96, PC57, PC64, PC109 680P_0603_50V. Add PC157 10P_0402_50V	2009.08.05	PT
3	Reserve 0.89V LDO soultion		P28	Reserve PU11, PC131, PC103, PC155, PC154, PC105 PR99, PR157, PR100	2009.08.05	PT
4	Adjust the +1.5VSP LDO feedback		P28	Change PC129 to 220P 25V K NPO 0402		
5						
6						
7						
8						
9						
10						

Version change list (P.I.R. List)

Page 1 of 2

Item	Date	Fixed Issue	Rev.	PG#	Modify List
01	2009/07/20	MEMO LIST: BOM Structure Error	0.2		Mount C170,C996,C997,C106,C196,C224,C905,R114,R115,R139,R406,R407,R185
02	2009/07/20	WWAN PLTRST#	0.2	P.14	Floating Pin17,30,32 and Mount R14 to connect PLTRST#
03	2009/07/20	Unify the quality of the capacitance	0.2	P.06	Change C56,C924,C933-22U from Y5V(SE00000868L) to X5R(SE000000I10)
04	2009/07/20	Intel MoW-WW28-glitch issue	0.2	P.08	Add R121,R124 pull-up STP_PCI# and STP_CPU# to +3.3VS
05	2009/07/20	Add LCD BIST function.	0.2	P.09/19	JP24 pin3 add LCD_TST and U27 pin16 add LCD_TST
06	2009/07/20	Add USB signal for touch screen function.	0.2	P.09	JP24-pin34,pin36 add USB signal/ pin6 connect to +5VALW and pin39 connect to GND
07	2009/07/20	Change USB connector.	0.2	P.21	Change JP16 connector.
08	2009/07/20	Change board ID to R02	0.2	P.19	Change R122 to 100K,R127 to 8.2K
09	2009/07/20	Change RJ45 LAN connector.	0.2	P.18	Change JP71 connector.
10	2009/07/20	Change BT connector.	0.2	P.14	Change JP22 connector.
11	2009/07/20	Add EC GPIO Function	0.2	P.19	Add Pin16-LCD_TST, Pin17-BT_RADIO_OFF# and Pin90-BT_DET
12	2009/07/20	For DELL Request	0.2	P.14	Pop R116, R118 for WLAN/BT co-existance control
13	2009/07/31	Change M/B to IO/B connector.	0.2	P.21	Change JP25 from 40 pin to 30 pin
14	2009/07/31	Change SIM Card connector.	0.2	P.14	Change JP73 connector.
15	2009/07/31	Add Stand off	0.2	P.23	Add H16
16	2009/08/04	Change battery connector.	0.2	P.30	Change JBATT1 connector.
17	2009/08/04	Change SATA HDD connector.	0.2	P.17	Change JP48 connector.
18	2009/08/04	Change RTC battery connector.	0.2	P.24	Change JP79 connector.
19	2009/08/04	For EMI concern circuit	0.2	P.09	Add ESD diode L65
20	2009/08/04	For EMI concern circuit	0.2	P.08	Remove RTS5159_48M; Change R137 from 22Ω to 33Ω
21	2009/08/04	Change 2P(Power board)connector.	0.2	P.20	Change JP42 connector.
22	2009/08/05	WLAN module pin define	0.2	P.14	Swap JP54.3 and JP54.5
23	2009/08/05	Change Audio Jack	0.2	P.16	Change JP60, JP61 connector.
24	2009/08/10	For TouchScreen circuit	0.2	P.12	Add R88, R93
25	2009/08/10	For Realtek Clock Generator Co-lay circuit	0.2	P.08	Add R94,R102,C182,C156; Change U3.27,U3.55,U3.72 to +1.5VM_CK505

Security Classification		Compal Secret Data		Compal Electronics, Inc.	
Issued Date	2009/03/25	Deciphered Date	2009/06/22	Title	
THIS SHEET OF ENGINEERING DRAWING IS THE PROPRIETARY PROPERTY OF COMPAL ELECTRONICS, INC. AND CONTAINS CONFIDENTIAL AND TRADE SECRET INFORMATION. THIS SHEET MAY NOT BE TRANSFERRED FROM THE CUSTODY OF THE COMPETENT DIVISION OF R&D DEPARTMENT EXCEPT AS AUTHORIZED BY COMPAL ELECTRONICS, INC. NEITHER THIS SHEET NOR THE INFORMATION IT CONTAINS MAY BE USED BY OR DISCLOSED TO ANY THIRD PARTY WITHOUT PRIOR WRITTEN CONSENT OF COMPAL ELECTRONICS, INC.				Size Custom	
				Document Number	
				401784	
				Rev A	
				Date: Wednesday, September 16, 2009	
				Sheet 32 of 33	

Security Classification		Compal Secret Data		Compal Electronics, Inc.	
Issued Date	2009/03/25	Deciphered Date	2009/04/20	Title	SCHEMATIC, MB A5732
THIS SHEET OF ENGINEERING DRAWING IS THE PROPRIETARY PROPERTY OF COMPAL ELECTRONICS, INC. AND CONTAINS CONFIDENTIAL AND TRADE SECRET INFORMATION. THIS SHEET MAY NOT BE TRANSFERRED FROM THE CUSTODY OF THE COMPETENT DIVISION OF RAD DEPARTMENT EXCEPT AS AUTHORIZED BY COMPAL ELECTRONICS, INC. NEITHER THIS SHEET NOR THE INFORMATION IT CONTAINS MAY BE USED BY OR DISCLOSED TO ANY THIRD PARTY WITHOUT PRIOR WRITTEN CONSENT OF COMPAL ELECTRONICS, INC.				Size	Rev
				Custom	A
				401784	
Date:	Wednesday, September 16, 2009	Sheet	33	of	33

www.s-manuals.com